

FITZ PARK, HOPE PARK & TOWNSFIELD CHARITABLE TRUSTS

Council Offices
50 Main Street
Keswick
CA12 5JS

Email: townclerk@keswicktowncouncil.gov.uk

3rd November 2023

A meeting of the Charitable Trusts listed below to be held at the Council Chamber, Town Hall, 50 Main Street, Keswick on **Thursday 9th November 2023 at 7.00 pm.**

Yours sincerely



Vivien Little
Town Clerk

HOPE PARK	Registered Charity	503465
FITZ PARK	Registered Charity	520327
TOWNSFIELD	Registered Charity	520295

AGENDA

- 1. Apologies**
To receive apologies for absence.
- 2. Minutes**
To authorise the Chair to sign as a correct record the minutes of the meeting held on 28 September 2023 (pages 7-9).
- 3. Declarations of Interests**
To receive any declarations of interests in respect of items on this agenda.
- 4. Chair's Report**
To receive the Chair's report.
- 5. Parks Manager's Report**
To consider the report of the Parks Manager.
- 6. Correspondence**
To consider the Hope Park Trust response to correspondence received, with supporting report provided by the Financial Officer.
- 7. Draft Budgets for Hope and Fitz Parks 2024-25**
To agree the draft budgets for Hope and Fitz Parks for the next financial year.
- 8. Hope Park & Fitz Park Budgets – 2nd quarter 2023-24**
To receive for information the 2nd quarter budget comparisons.
- 9. Flood Strategy**
To receive a report from the Trust Clerk.
- 10. Fitz Park Development**

To consider the report of the Clerk and verbal update from Councillor Harwood.

Prior to the following business the Chair will move the following resolution:

'That under the Public Bodies (Admission to Meetings) Act 1960, the public and representatives of the press and broadcast media be excluded from the meeting during the consideration of the following items of business as publicity would be prejudicial to the public interest because of the confidential nature of the business to be transacted.'

11. Crosthwaite Road Car Park

To consider the report of the Clerk.

To: All Councillors/Trustees
Press

FITZ PARK, HOPE PARK & TOWNSFIELD CHARITABLE TRUSTS

Minutes of the meeting of the Charitable Trusts listed below to be held at the Council Chamber, Town Hall, 50 Main Street, Keswick on Thursday 28th September 2023 at 7.00 pm

Present:

Chair
Councillor Jean Murray

Councillors

Steve Harwood	Denstone Kemp	Sally Lansbury
Benita Laphorn	Tim Parsons	Adam Paxon
Lorraine Taylor		

Also present were Vivien Little (Trust Clerk) and Christine Fawcett (Parks Manager).

30. Apologies

Apologies for absence were received from Councillors Dunn, Chris Houghton, Claire Houghton and Catherine Parker (RFO).

31. Minutes

RESOLVED that the Chair be authorised to sign as a correct record the Minutes of the Trust Meeting held on 13th July 2023 (pages 4-6).

32. Declarations of Interests

No declarations of interest were made at this meeting.

33. Chair's Report

The Chair reported that anything she would have said would be covered in all reports in the agenda.

34. Parks Manager's Report

Consideration was given to the report of the Parks' Manager. The Parks Manager explained that it had been very wet in Hope Park. The Parks Manager had been in conversation with the Great North Air Ambulance Service about the helicopter, and they have agreed to work together to ensure that the area would have paving put in place, and also a physical donation box put in, with GNAAS volunteers emptying it on a regular basis.

Grass cutting in Lower Fitz Park had been suspended until the spring.

RESOLVED that the request for the use of the Chimenea be refused, due to the policy of no open fires and BBQs in the park grounds (Action – Parks Manager)

Councillor Kemp arrived at 7.06pm

35. Future Development plans for Upper Fitz Park

Consideration was given to the report of Councillor Harwood/the Clerk. Councillor Harwood apologised for the lateness of the report, and the fact that there were no updated plans as yet. He explained that an application had been made to the LDNPA to fell the two Western Hemlocks on the site, but as per Trust policy, 3 new trees per tree felled would be put into the parks.

The next stage would be to get the construction drawings prepared, which would give an estimate as to costings.

Discussion was had over the car parking arrangements for the bowling club, and Councillor Harwood produced plans of potential parking area next to the museum, which could be prepared using hard core, with grey dust on top. This would be primarily used for staff parking, but the Bowling Club, who could use it for their matches instead of the current area beside Café HNW, and will be asked for a contribution towards the preparation of the area. Trustees raised concern over an increase of cars in the park, especially with regard to liability in case of an accident, and also the potential for visitors to Keswick to see it as free parking. The Clerk stated that it would be permit parking only, and the gates must be shut but users once they are through them.

RESOLVED that:

- i) due to the Professional Fees exceeding allowed budget, any extra fees will be paid from the sinking fund (Action – RFO); and
- ii) the plans for the parking area be agreed, with the clubs to be contacted regarding liability (Action – Clerk).

36. Budget Comparisons

RECEIVED budget comparisons for the first quarter.

37. Trust Funds Movement

Trustees considered the report of the Responsible Financial Officer.

RESOLVED that the Trust Funds Movement take place as set out in the report (Action – RFO).

38. Climate Change Action Plan

Councillor Lansbury and the Parks Manager gave an update on progress the parks had made with regard to the Actions the parks had taken in relation to the Action Plan. More work was obviously needed, but it was a good start. More information sharing was needed (Action – Clerk), and also more work with the sports clubs, as well as work on water usage.

RESOLVED that the Climate Change Action Plan for Keswick Town Council/Keswick Parks, be updated as discussed (Action – Clerk).

39. Requests for Use of Keswick Parks

Consideration was given to requests to use the Keswick Parks.

RESOLVED that:

- i) The dates proposed by Keswick Athletics Club be noted:
- ii) The date proposed by Lakeland Trails be approved, and the fee be put up to £800 + VAT + £1 per competitor; and
- iii) Ragged Edge Productions be given permission to use the park for their audio dramas on a 12 month trial basis, and to ask if they would be prepared to give a donation to the parks (Action – Clerk).

Prior to the following business the Chair will moved the resolution:

‘That under the Public Bodies (Admission to Meetings) Act 1960, the public and representatives of the press and broadcast media be excluded from the meeting during the consideration of the following items of business as publicity would be prejudicial to the public interest because of the confidential nature of the business to be transacted.’

40. Contracting – Crosthwaite Road Car Park

Consideration was given to the report of the Financial Officer.

RESOLVED that the item be deferred to the next Trust meeting (Action – Clerk).

The meeting closed at 8.20 pm.

Chair

Date

Chairs Report Fitz Park Trust Meeting 9th November 2023

A Development and Ideas session was held on 17th October 2023 with myself, Chris Houghton, Vivien Little, Catherine Parker and Ania Mylinczak, together with the Parks Manager and Parks Staff, to start to look at a short, medium and long term plan for the future development of all Parks within the remit of the Parks Trust.

It was a very lively and productive session, resulting in a good deal of creative thinking and interesting ideas for the future of the parks.

Viv helpfully took some notes, and these are attached, and are intended to form a starting point for Trustees and staff to develop an ongoing plan for the future.

In order to take this forward, I would suggest that the next Trust Meeting on 11th January is dedicated as a single item Agenda on this issue, for Trustees to start to formulate a future plan.

I would suggest we allocate 2 hours for this meeting, and it would be very helpful if as many Trustees as possible could attend.

In the meantime, any ideas, comments, thoughts etc on how we may progress this are welcome, and can be sent to Viv or myself and will be taken forward and discussed at that meeting.

Jean Murray

Meeting with Staff notes – 17 October 2023

In attendance: Jean Murray (Chair of Keswick Parks Trust), Chris Houghton (Vice-Chair of Keswick Parks Trust), Steve Harwood (Mayor of Keswick), Vivien Little (Town Clerk), Catherine Parker (RFO), Christine Fawcett (Parks Manager), Ania Mlynczak (Admin and Finance Assistant), Matt Gee (Senior Gardener), David Collis (Gardener), Sara Pickett (Gardener).

Jean Murray, Chair of Keswick Parks Trusts, gave an introduction to attendees, and set out the plan for that afternoon, which was to look at short, medium and long term strategy for the parks, and to ask staff what ideas they wanted to share, with no idea being a 'wrong' idea.

The questions which were asked were:

- What do we want to keep?
- What do we want to change?
- What do we want to see being developed?
- What are the steps we need to take to achieve this?

The discussion was split into three sections – Fitz Park, Hope Park and Townsfield.

Fitz Park

Upper Fitz Park

- General view was not to get rid of anything, but develop what we have.
- Café HNW to develop as per plan, and develop staff/parks storage
- Keep Fitz Park family oriented, with things like Boules, Giant Chess and Draft sets (*around £500/700 per set*), and skittles being added
- Could a gift shop be added in, or merchandise be produced (Calendars, Postcards, rubbers, key rings, note pads, pencils, pens, pin badges, tea towels, shopping bags, fridge magnets being introduced). Could be sold at the Museum/Café HNW/TIC/through a website.
- Keep all fine turn areas
- Painting fences on Station Road and Brundholme Road
- Fix 'Keswick Coat of arms' panels on railings
- Extend parking behind Keswick Museum to remove cars from Upper Fitz
- Potential other uses – possibly use the top tennis courts for income generation (look at current costs vs income)
- Could we use the top circle in Upper Fitz for weddings?
- Introduce a proper booking system for tennis courts, ensuring more even play in the season
- Undertake a feasibility study for Fitz Park for suggestions.

Lower Fitz Park and Hospital Field

- Keep existing areas
- Upgrade the play area – remove sand in toddler area, remove wooden edging and replace with recycled plastic
- Rides around the park – miniature trains (could franchise out)
- Put small goal posts near the MUGA (kids kick the ball there anyway)
- Trails/Orienteering through the park
- Guided talks
- Big notice board adjacent to entrance gates for sports fixtures and park events.

- Hospital Field – form nicely landscaped ‘Events’ car park, accessed off Crosthwaite Road – income generation.
- Extend Station Road past swimming pool to roundabout to create a boulevard approach to the park
- Hospital Field – look at commissioning a feasibility study. Could we put business units on there (income). An education facility for kids – ID flora/fauna habitat (park busses in car park and use Elizabeth’s Wood car park).
- Bug hotels/bird feeders
- Viewing platform
- Sell adverts on the back of maps for tree trail
- Make coasters with wood from trees taken down
- Could we create something for Archery Field?

Hope Park

- Upgrade Crazy Golf
- Sponsored art work on wall of new development
- Demolish old store
- Additional lean-to on existing building
- Efficient water provision
- Solar panels
- Electricity generation
- Facebook page
- Wedding Venue
- Woodland Walk Area
- Photography competition
- Raffle
- Memorial Wall
- Irrigation system for golf course
- Windmill
- Increase the number of water bowsers for the parks to enable more efficient watering.
- Put a borehole in
- Photography competition – once a month, encourage people to submit photos (for a small fee). Work out a deal with the Reminder to post the winning picture(s), create a calendar from the winners
- Christmas raffle

Townfield

No suggestions were made with regard to Townfield – with limitations of village green, there was not a lot that could be suggested.

General thoughts

Could we look at Pennies for Charity – work with the Cafes, and use micro donations to improve donations to the park.

Donation points?

Overall, it was felt that this was a successful day – a lot of ideas had been discussed, and it was clear the staff had a lot of pride in working for Keswick Parks, and had a lot of ideas for how the parks could be developed.

Parks Manager Report Nov 2023

Christine Fawcett

Many thanks must go to the parks staff for their hard work, and the ongoing support of the three ladies within the office of Keswick Town Council. The weather in September and October has been scattered with wet downpours and slowed down progress in all the Parks to renovate and improve areas.

Hope Park

The summer bedding has now been removed and the winter bedding has now been planted including yellow coloured polyanthus, along with orange emperor tulips for a spring show of colour.



The yew and box hedges have now been cut back and inside of the boundary hedge running along Heads Road also completed. The roadside of the hedge

will be cut back in November when opportunities arise due to parked cars on the road.



The lower fairways of the pitch and putt have all been verti quaked to allow water to drain better through the surface and the greens look well for the time of year.

Half term has been busy with a good number of visitors in the park. With summer daylight hours coming to an end on the 29th October, weekend litter collections also come to a close and bins will be emptied throughout the working week days.

The footpath through the woodland walk has been renewed with another coat of grey bothel dust at the bottom end. This helps to maintain the footpath and level any uneven surfaces.

The Care of Trees from Grange over Sands will be carrying out the annual tree survey in late November. WSP (formally Capita) have carried out the report in the past but this year they have not provided a quote for the survey.

The weeping ash tree next to the café entrance is suffering badly from ash dieback. Despite us hoping the tree would recover, it has deteriorated more this summer and an application has been made to remove the tree.

Cumbria in Bloom results have been released and we have received 3 Gold awards for the park including Tourism, Small woodland copse, and Biodiversity. A huge thankyou to Hope Park Leisure and the parks staff for all your work towards this achievement.

Judge's comments are at the end of the report.



Townsville

This area has been cut for the final time by our contractor and is being monitored on a weekly basis. The new wooden entrance gates have been fitted which includes a pedestrian gate.

Lower Fitz Park

Due to the continuous wet ground conditions in late September the grassed areas were not cut until 18th October. This will be the final cut of the season and we will be removing leaves from the footpaths on a regular basis.

In the play area new bearings have been fitted to the Giro spiral and new springs fitted to the entrance gates. In the coming months the remaining central circle retaining timber that is showing signs of decay will be replaced as part of the winter maintenance plan.



Upper Fitz Park

Summer games have come to an end and work has been carried out on the fine turfed areas. Scarifying of all the playing areas has been carried to remove dead thatch and allow the turf to breathe and drain more freely.

Many grassed areas have been pro-cored including the bowling green, putting surfaces and the tennis courts. The Bowling Green, and tennis courts have been over seeded and four-ton of 60/40 top dressing applied to aid drainage and improve aeration.

Autumn fertilizer has also been applied and the grass sward has responded, and new grass growth is present. A light grass cut has been carried out on these newly seeded areas, to encourage the grass to tiler and fill out ready for next year's season.

Weeding of shrub borders is under way and the hedges at Wivell Bridge and the allotments have been cut back. Crosthwaite

Road hedge will be cut by a contractor in the coming weeks.



Cumbria in Bloom results have been released and we have received 1 Gold award and 3 Silver Gilt awards for the park including Tourism, Small woodland copse, Biodiversity and Kings Coronation Feature. A big thankyou to Café HNW and the parks staff for all your work towards this achievement. Judge's comments are at the end of the report.

All parks' staff are to attend Climate and Carbon literacy training in February next year.



Registered Charity No: 1117828

Cumbria Tourism Environment and Horticultural Award – Judged by Cumbria in Bloom

Name of entry: CAFÉ HOPE	Judging Date: 11.7.23
Category: REGIONAL/TOURISM 6	Judges: Coralin Pearson/Ali Gordon

Visitor Attractions		
	MAX	ACT.
Recognition and promotion of heritage – <i>how readily and effectively is this communicated to visitors</i>	30	27
Appeal for visitors – <i>use of flowers/greenery, attractiveness of any outside area to enhance experience</i>	10	9
Horticultural practice – <i>standard of cultivation and maintenance (inc grassed areas), quality of plants, sustainability, new planting etc</i>	10	9
Environmental consideration – <i>as appropriate, impact on wildlife and surroundings. Recognition of demand placed on natural resources and any harmful impact on the environment. Any mitigating action taken</i>	10	8
Pride of place – <i>clean and tidy. Maintenance of grounds, furniture and signage etc</i>	10	9
Overall assessment of the impact of the above to improve performance and reputation in the local community <i>e.g. Awards, PR, staff loyalty etc.</i>	30	24
TOTAL POINTS AWARDED FOR	100	86
MEDAL AWARDED		GOLD

JUDGES' COMMENTS – continued overleaf
<p>Areas of Achievement: Hope Park and Café Hope are honeypots of the thriving tourist destination of Keswick – they manage to maintain a welcoming and beautifully maintained large area of leisure activities, green walks, a woodland walk, a more formal area of colour and interest created by carefully designed walks through and around a mix of annual planting, herbaceous borders, shrubs and trees of a wide and healthy range. The quality of planning and construction of replacement paths and bridging is excellent.</p>

Café Hope supplies an attractive rest area for good light refreshment with well thought out and colourful trellis planting to cope with a large footfall and to create a lovely frame to the more distant greens and trees of the golf links. It provides good quality seating outside as well as inside, well maintained and colourful planters and plenty of clear, clean signage inviting dining, takeaway ice-cream and a friendly welcome for customers dogs as well.

Away from the main thoroughfares of the Park an area of quieter walkways through woodland has been carefully and thoughtfully developed since flooding of this area and completed earlier this year. Bio-diversity, a naturally occurring feature of an area of Hope Park's size and range of open and planted spaces has been added to by placement of bird and bug boxes throughout the Park, conservation of a naturally 'damp' area and the creation of an excellent 'hide' area where walkers are invited to look into an enclosed area (one wall being of stacked logging, itself a rich microhabitat for flora and fauna) full of feeders, log piles and water access.

Café Hope, with its carefully preserved 'Lake District' feel of tourist architecture gives a welcome to approaching visitors that is maintained throughout the Park

Areas for Improvement: There seem to be plenty of ongoing plans for developments both within the park and at Café Hope. It would be good to see the development of the interesting ideas for less fencing around the boating pool and barked area to extend the welcome of Café Hope to more and equally attractive outside seating. As with all wooded areas and planting including mature trees there are one or two trees that will need a watchful eye, including the rather sad specimen at Café Hope (which may still recover...).

With a large and very mixed age range of footfall it is difficult to envisage a safe clear water area but perhaps the overgrown damp area of the woodland could be given a little more definition as an extensive bog garden with associated planting, boulder nests and stumps for the present viewing platform to become a more attractive place to pause and observe?

Cumbria in Bloom Biodiversity Marking Sheet 2023

Name of Site:	CAFÉ HOPE, LAKES ROAD
Judge/Judges:	Coralin Pearson/Ali Gordon
Date of Visit:	11/7/23

Judging Criteria

A wide variety of trees, shrubs, plants, creates the best way to build habitat and biodiversity. Pollinator flowering plants, space for native natural species. Wildflower border.	20	19
Pest control using natural means of control, minimum use of toxic chemicals, cleanliness, and good hygiene in all activities. Use of produce protection with netting, fruit cage.	20	17
Encouraging wildlife to occupy green space, feeding birds, providing for bird and bat nesting and roosting, protection for bees, insects, butterflies and moths, protection, and space for hedgehog.	20	17
Local recycling and composting, type of container media, collection of rainwater, use of natural fertilizer. Removal of litter to prevent danger to species. Look for permeable surfaces to reduce water runoff and prevent flooding. Create space for natural seepage of rainwater.	20	18
Provide space for wild nature, provide water feature habitats for frogs, toad, newt, tadpoles, water plants (marsh marigold, forget me not), evidence of creation of mixed hedgerow and woodland and suitable maintenance.	20	17
Total Marks	100	88

Comments:

Hope Park has a litter removal plan in place for 9 x 1200 litre bins per week. Dogs are welcome on leads throughout the Park. This extensive and complex area for open air recreation and enjoyment has a very heavy footfall and remains an area returned to and remembered by visitors and the Keswick community alike. It has quite a task set to be rich in bio-diversity as well. Hope Park has a very wide range of mature trees, very many of them native species from majestic beech to elderly birch wrapped in ivy. A second lower canopy of trees, shrubberies, well stocked herbaceous borders, wild flower drifts of pollen rich species, even the selection of bedding planting aimed at attracting insects, and areas of grass mown at different levels all help add habitats rich in food and shelter. The copse area is cleverly managed with slightly elevated walkways to encourage access and enjoyment while dissuading footfall into the wilder undisturbed areas of more densely growing vegetation. Bird boxes and bug boxes are placed on a variety of trees, conifers and deciduous and a lovely area for birds and bugs is created within an enclosure walled on three sides by latted fencing with 'spyholes' added and one wall created by logged wood (from park maintenance activities) which creates its own rich microhabitat for flora and fauna. Visitors to this special area can enjoy identifying birds they may see taking

advantage of the lovely range of feeders, log piles and water access, aided by an informative identification board. In addition they can do their bit to help the future diversity of birdlife by adding something into a donation box for feed costs.

New paths have been laid and completed this spring (following wear and tear and damage by weather/water) which take into account the need for natural and effective drainage into the beck that runs through the Park – a mix of structural drainage and use of water permeable surfacing. The treatment of algae/moss accumulation on pathways to ensure safety for the public is non toxic and safe for animals, humans and water courses.

Hedgerows are maintained manually. Growing medium where needed (e.g bringing on plug plants) is peat free and good horticultural practice helps maintain healthy planting and clear pathways without need for chemicals. The use of the Park by humans during the day puts pressure on its wildlife at ground level but the range of possible habitat, thoughtful interventions and level of maintenance ensure a diversity will be encouraged and thrive in this enduring green space.

Cumbria in Bloom Small Woodland Copse Marking Sheet **2023**

Name of Site:	CAFÉ HOPE, LAKES ROAD
Judge/Judges:	Coralin Pearson/Ali Gordon
Date of Visit:	11/7/23

Judging Criteria and Marks

Layout – perimeter planting, centre planting, use of site.	20	18
Whether the trees, shrubs, plants are suitable for the location and wildlife.	20	18
What provision is made for future management and maintenance, short and long term.	20	19
Educational features. Photographic evidence of all year interest.	20	14
Quality and suitable care of the site.	20	20
Total marks	100	89

Comments:

This copse has been cleverly linked via a corridor of attractive specimen trees, wildflower drifts and unmown grass to the more open activity areas of Hope park thus leading both humans, animals and birds down to this more secluded natural area. The perimeter is a mix of mature and semi-mature trees including ash, birch, oak, hawthorn, alder and willow with an evergreen element of varying conifers and one or two more exotic specimens from earlier times. Amongst these, more shrubby plants thrive in lighter glades created by sensitive removal of less healthy tree specimens (or those that succumbed to the serious flooding of this area). Around and beneath these the undergrowth has largely been allowed to develop its own natural blend of wild plants although banks along the perimeter of the copse have been under planted with removed bedding plants of primulas from the more formal gardens of the Park – good recycling. This area is quietly a hive of industry with a large heap of composting chipped wood (from Park maintenance but also from local landscapers) at one end and a working compost area at the other end which will be planted up as it becomes workable compost/soil – good use of Park maintenance material to aid further development of this interesting copse.

Access via safe and sustainable wooden walkways through the wettest areas of the copse (but which also take advantage of the leafy glades) is sturdy, slip resistant with chicken wired surfacing, and designed to stay in place even through future flooding from the nearby river running down to Derwent Lake. These wooden walkways also cleverly encourage walkers to keep out of the undergrowth on either side while giving elevation to look over into it.

Bird boxes are nestled amongst the trees, dark brown recycled plastic seating nearby the perimeter drystone wall and a picnic bench area on a concrete plinth at the exit/entrance area of the copse all add to the use of this area for 'time out' and observation.

A very pleasant and peaceful natural area away from the bustle of Keswick and with well thought out plans for its sustainability (from both human footfall and future flooding) this copse works very well.

For the future it would be good to see the overgrown damp area given a little more definition as an extensive bog garden with associated planting (but still in keeping with natural species – like the flag and bulrush already in the area), boulder nests and larger stumps and ferns so that the present viewing platform may become a more attractive place to pause and observe.



Registered Charity No: 1117828

Cumbria Tourism Environment and Horticultural Award – Judged by Cumbria in Bloom

Name of entry: CAFÉ HNW, UPPER FITZ PARK	Judging Date: 11/7/23
Category: REGIONAL/TOURISM 6	Judges: Coralin Pearson/Ali Gordon

Visitor Attractions		
	MAX	ACT.
Recognition and promotion of heritage – how readily and effectively is this communicated to visitors	30	27
Appeal for visitors – use of flowers/greenery, attractiveness of any outside area to enhance experience	10	9
Horticultural practice – standard of cultivation and maintenance (inc grassed areas), quality of plants, sustainability, new planting etc	10	9
Environmental consideration – as appropriate, impact on wildlife and surroundings. Recognition of demand placed on natural resources and any harmful impact on the environment. Any mitigating action taken	10	9
Pride of place – clean and tidy. Maintenance of grounds, furniture and signage etc	10	9
Overall assessment of the impact of the above to improve performance and reputation in the local community e.g. Awards, PR, staff loyalty etc.	30	23
TOTAL POINTS AWARDED FOR	100	86
MEDAL AWARDED		GOLD

JUDGES' COMMENTS – continued overleaf

Areas of Achievement: Café HNW and Upper Fitz Park have a quite specific area of use by both residents of Keswick and visitors to the area. Providing within a large green space in a curve of the River Greta the opportunity for bowls, croquet, putting, tennis and table tennis for public use (as well as a club bowling green, club tennis courts and club pavilion) and the bright and cheerful Café HNW for a welcoming pause and light refreshments and equipment for the public sports facilities. After extensive damage from flooding the refurbished park now has several well thought out features to lessen such extensive damage in the future – created for

Keswick on a water meadow this park will always be liable to some flooding despite flood defences created for Keswick as a whole. Maintenance of this beautifully kept Park is excellent. With its large footfall it manages the problem of litter and possible dog fouling very well – bins are easily accessible, frequently emptied and good staff care. Quite formal but very clean paths link around the sports facilities and the river walkway but the mix of mature trees (including specimen plantings from the Parks early history like a wonderful Wellingtonia), mixed evergreen and deciduous shrubbery, herbaceous areas, colourful and healthy planters and even a wildflower drift give a green and diverse view from all directions. Café HNW has a lovely themed character set in the original tennis club changing rooms (maintaining a typical Lake District architecture) sensitively re-invented as a small, clean, bright and interesting café. All things ‘bike’ is the theme (hence the cheerful yellow colour throughout, vintage bikes and biking accessories decorating the cafe). A high footfall both for the café and for the equipment it holds for the public sports but everywhere was clean, tidy, bright and cheerful including the outside seating areas with options for being in the open or beneath pergola type covering – or even the trees. So much squeezed into such a small area! Signage was good and clear including an excellent up to date map of the Park giving the visitor a history of the park together with a unique mapping and Keyed labelling of every feature and tree. Leaflets were available for a Tree Walk set out for Lower Fitz Park and for children there is an I-Spy trail around Upper Fitz Park. The small outside stage added an unusual element with removable games (such as Connect 4) but clearly with many possible uses. An excellent Park for all and quite clearly showing the pride its staff has in maintaining it and sharing in its reputation.

Areas for Improvement: The Park and Café HNW appear to be operating at full stretch and doing it very well. Perhaps for the future it may be possible to provide more toilets – when a group is needing access it presently takes a while..... With the popularity of this venue and its sporting facilities it encourages visitors to stay and toilets inevitably become necessary.

Cumbria in Bloom Small Woodland Copse Marking Sheet **2023**

Name of Site:	CAFÉ HNW, UPPER FITZ PARK
Judge/Judges:	Coralin Pearson/Ali Gordon
Date of Visit:	11.7.23

Judging Criteria and Marks

Layout – perimeter planting, centre planting, use of site.	20	15
Whether the trees, shrubs, plants are suitable for the location and wildlife.	20	12
What provision is made for future management and maintenance, short and long term.	20	17
Educational features. Photographic evidence of all year interest.	20	14
Quality and suitable care of the site.	20	18
Total marks	100	76

Comments:

This small grouping of trees and shrubs opposite the Café HNW presents a vibrant use of a 'copse' while not necessarily being easily able to fulfil all of the criteria which a less exposed and more 'natural' grouping might be able to do. However, it does provide a mix of evergreen and deciduous trees with an under-canopy of gently maintained shrubs giving variety of texture and cover and a floor of chipped bark and leaf litter. Ivy is left to climb one of the trees and rich moss adorns the bark of others. This natural canopy of trees is used as an outdoor seating area with wooden picnic benches, small themed 'sails' to add to cover for customers and bunting and lights sensitively wrapped between some of the trees. It also contains a small wooden stage covered in artificial grass where removable family games such as connect 4 and Jenga were placed. It was well maintained, very clean and inviting for customers to sit beneath and amongst to enjoy the green shade, leafy surroundings and soft natural woodland floor.

Given its obvious limitations as to size and the heavy use it must sustain it works well. Improvements could include siting of bird and bug boxes amongst the trees, possibly a carefully sited hedgehog box amongst the shrubs and leaf litter (probably never to be visited by a hedgehog but for visitors it sends the message...) and perhaps a bird identification board attached to the rear of the stage back as there are plenty of birds amongst its trees as this small copse is linked to grassed areas and other trees and shrubs of the Park, forming an almost continuous weave of 'corridors' for them.

Planting of pollen rich flowering shrubs would need to be sympathetic with the Park's choice of planting but perhaps one of the smaller varieties of buddleia?

Cumbria in Bloom Biodiversity Marking Sheet 2023

Name of Site:	CAFÉ HNW, UPPER FITZ PARK
Judge/Judges:	Coralin Pearson/Ali Gordon
Date of Visit:	11/7/23

Judging Criteria

A wide variety of trees, shrubs, plants, creates the best way to build habitat and biodiversity. Pollinator flowering plants, space for native natural species. Wildflower border.	20	17
Pest control using natural means of control, minimum use of toxic chemicals, cleanliness, and good hygiene in all activities. Use of produce protection with netting, fruit cage.	20	17
Encouraging wildlife to occupy green space, feeding birds, providing for bird and bat nesting and roosting, protection for bees, insects, butterflies and moths, protection, and space for hedgehog.	20	16
Local recycling and composting, type of container media, collection of rainwater, use of natural fertilizer. Removal of litter to prevent danger to species. Look for permeable surfaces to reduce water runoff and prevent flooding. Create space for natural seepage of rainwater.	20	18
Provide space for wild nature, provide water feature habitats for frogs, toad, newt, tadpoles, water plants (marsh marigold, forget me not), evidence of creation of mixed hedgerow and woodland and suitable maintenance.	20	12
Total Marks	100	80

Comments:

The Café and Park are in full daily use within a fairly tight area and bordered along one side by the curve of the River Greta. The quality of the river water can be variable and with free public access due regard must be given to safety. Therefore there are sound reasons for (apart from the natural population of ducks and transient occupants of small inlets along its steep banks), not developing habitat for water creatures even though it is temptingly close.

The wide range of mature trees and more recent plantings together with boundary hedging and borders of shrubs, grasses, ferns and perennial planting give an almost continuous weave of corridors for birds, insects and small mammals to move around the whole of the park. The central area, given over to public sports, is mown grass but with more than one height where possible and pests attracting the turf digging attentions of crows are removed manually as much as possible. Most unplanted spaces around trees are barked or left with a good covering of leaf litter and as the access paths are clear, attractive and well maintained, footfall amongst the quieter, shade giving areas is gently discouraged. A large 3 bay composting area in plain view is an excellent reminder of how soils can be replenished naturally and adjacent to this a quiet stretch of banking has been thoughtfully developed

to house a large bug hotel (with chicken wire protection from possible invaders – larger birds, squirrels, humans?), a wood pile left amongst free growing crocosmia and a large weather-proofed bird feeding station, bird box and bracket fungi left intact. Linking planting of large grasses and shrubs ensures 'visitors' can access this habitat area safely.

At a newly developed area a blend of very attractive and well laid blocks (thoughtfully jointed with water permeable and weed suppressant self-setting compound) has been used and the seating made entirely from recycled hardwood from a tree removed from the Park. A stunning feature and other pieces of this wood have been used as stools beneath a tree and as path edging to the beautiful Wellingtonia.

Plenty of bird boxes amongst the mature trees, stumps left as microhabitats but with nature themed carving to them for visual interest and a drift of wildflowers all help to increase the natural diversity of this traditionally styled but very green Park. Footfall creates 'desire lines' and grass next to paths can become worn away. Chippings have been temporarily added to one or two edges to prevent erosion and finding long-lasting solutions (especially around the lovely carved sea-eagle where family photos are very popular but where natural planting has been worn away) are on-going. It would be good to see more perennial planting of pollen rich perennials and flowering shrubs and bulbs – perhaps in areas where existing evergreen shrubs are planned for removal?

Thought has been given to green practice in the choice of and investment in maintenance machinery so that emissions and energy use are reduced to a minimum – good to see. 'Green' meshed underlay has been used in the maintenance area behind Café HNW to ensure all-season access without undue rutting while encouraging grass to continue to grow through.

Bench seating around the Park is made of recycled plastic, easily cleaned and long lasting.

Given its remit as a Park for the community and visitors Upper Fitz Park and Café HNW are doing a remarkable job with bio-diversity while providing an excellent and memorable venue for all.



**CUMBRIA IN
CATEGORY AWARD**

BLOOM SPECIAL

King Charles III Coronation Feature Marking Sheet

The King’s Coronation Feature can be **anything** in your community that celebrates the Coronation of the King and Queen Consort. For example, it could be a small water feature; a specially developed flower or fruit and vegetable beds; a creature friendly habitat; a woodland development; or even a display of outdoor art - be as creative and innovative as you like.

Name of Site:	Café HNW, Upper Fitz Park
Judge/Judges:	Coralin Pearson/Ali Gordon
Date of Visit:	11/7/23

Marks:

	Max Marks	Marks
Originality of Ideas	30	25
Potential impact on the local community	40	30
Innovative use of resources and materials	30	26
Total Marks	100	81

Comments:

We were unable to see the entirety of the feature created for King Charles III Coronation by the time of our visit but the outstanding feature , still in residence, was a lovely penny-farthing cycle, complete with saddle which had been carefully wrapped entirely in red, white and blue ribbon with illuminated bulbs adding to the festive feel. This was at the entrance area to Café HNW and must have been, together with festive bunting and other cafe features, a clear, fun and unusual statement of celebration for all to see.

Town Clerk

From: Catherine Parker
Sent: 02 November 2023 08:51
To:
Cc: Town Clerk; Parks Manager
Subject: RE: Golf Ball hitting window of Greta Gardens, Keswick, CA12

Good morning

Thank you for your email, however we have also received a letter from Mrs L Blackburn-Graham (Manager at Great Gardens) and both your email and the letter will be considered by Trustees at their next meeting to be held on 9th November 2023.

Kind regards

Catherine

-----Original Message-----

From:
Sent: Tuesday, October 31, 2023 3:18 PM
To: Catherine Parker <catherine@keswicktowncouncil.gov.uk>
Subject: Re: Golf Ball hitting window of Greta Gardens, Keswick, '

Dear Catherine

Thank you for your response. We have not completed the form as we did not report it in order to receive compensation but rather to see if anything can be done to prevent it from happening again. Maybe the area where the golfers can hit the ball could be restricted, safety warning signs erected and the wire netting surrounding the golf course be extended. We are more concerned that it might happen again and cause injury to ourselves on our balcony and would like to see the area made safe. It would be good if you would send a safety officer down to review the area and let us know their findings please.

Look forward to hearing your suggestions

Sent from my iPad

> On 26 Oct 2023, at 09:22, Catherine Parker <catherine@keswicktowncouncil.gov.uk> wrote:
>
> Good morning
>
> Thank you for your email received yesterday.
>
> Please could we ask you to complete the attached Incident Statement and return this to us, a scanned emailed copy will suffice. We will then forward this to our insurers, Zurich Town & Parish Councils Team, who will deal with this on our behalf.
>
> Kind regards
>
> Catherine
>

> -----Original Message-----

> From: Ania Mlynczak <office@keswicktowncouncil.gov.uk>

> Sent: Thursday, October 26, 2023 8:56 AM

> To: Catherine Parker <catherine@keswicktowncouncil.gov.uk>

> Subject: FW: Golf Ball hitting window of Greta Gardens, Keswick, CA12

>

>

>

> -----Original Message-----

> From:

> Sent: Wednesday, October 25, 2023 1:57 PM

> To: Ania Mlynczak <office@keswicktowncouncil.gov.uk>

> Cc:

> Subject: Golf Ball hitting window of Greta Gardens, Keswick, CA12

>

>

> I am writing today to report that a golf ball from the golf course opposite our first floor apartment hit our lounge window as we were sitting in there, it bounced down onto a pottery jug on our balcony which broke and sent chunks of pottery flying. This is the second time a golf ball has landed onto our balcony. If we had been out there it could have caused serious injury plus we are becoming nervous about going out there. It hit the window so loudly that at first we thought it was a gunshot which was very frightening for us.

>

>

>

> Sent from my iPad

> <Keswick Town Council - Incident Statement.doc>

Mrs L Blackburn-Graham
Greta Garden's office
Crow Park road
Keswick, CA125EL
Mob:(

1st November 2023

Attention of: Keswick Town Council
Keswick
Cumbria

Subject: Concerns Regarding Damage to Cars and Properties from Pitch and Putt Golf Balls

Dear Councillor Harwood,

I am writing to express my concerns regarding the ongoing issues of damage and disruption caused by pitch and putt golf balls to cars, property, and numerous near misses of elderly residents when in the garden at Greta Gardens. As the manager of Greta Gardens, I have witnessed and experienced the detrimental effects of these golf balls. I believe it is crucial that immediate action is taken to address this matter before a resident, staff, or a member of the public using the right of way public footpath is seriously injured.

While I appreciate the council's efforts in providing recreational facilities, it is apparent that wayward shots from the pitch and putt golf course are causing damage to vehicles and residents properties. There have been numerous incidents of golf balls striking parked cars, resulting in dents, scratches, and a broken windshield. Additionally, properties have suffered damage to windows and garden equipment due to the trajectory of these golf balls. I myself and a number of residents have approached the local pitch and put to be informed that Patrons are informed that it is a pitch and put and that balls have to be played low and that the staff from the pitch and put watch patrons while on the course and address any anti-social behaviour.

To mitigate these issues, I kindly request that the council considers the following measures:

1. Erecting a higher safety net or barriers around the golf course to prevent golf balls from reaching Greta Gardens properties and roadways.
2. Increasing signage and warnings around the golf course to alert players to the potential hazards and remind them of their responsibility to avoid hitting balls high and outside the designated area.

3. Ensuring regular monitoring and enforcement of safety rules, including monitoring tee times, enforcing proper golfing etiquette, and taking appropriate action against individuals who repeatedly disregard safety guidelines.

By implementing these measures, we can strike a balance between providing recreational opportunities and safeguarding the well-being of elderly residents and properties at Greta Garden's.

I kindly request that the council takes my concerns into serious consideration and takes prompt action to address this issue. I would appreciate being kept informed of any progress made in resolving this matter. Please do not hesitate to reach out to me if you require any further information or if I can assist in any way to help resolve this issue.

Thank you for your attention to this matter. I trust that the council will take the necessary steps to ensure the safety and peace of mind of residents in our community.

Yours sincerely,

L Blackburn-Graham

Mrs L Blackburn-Graham
Manager Greta Garden's

Hope Park – Golf Ball Incidents – Further information

Year	Incidents Reported	Location of Incidents
2015	2	The Heads
2016	2	The Heads
2017	1	The Heads
2018	1	The Heads
2019	1	The Heads
2020	0	
2021	1	The Headlands
2022	1	The Heads
2023	1	Greta Gardens

- Inspections are carried out on a daily basis by the Parks Manager or trained member of staff, inspection sheets can be supplied to our insurers if required.
- Regular risk assessments are undertaken.
- Problematic golf tees have been repositioned on two separate occasions when required.
- All golf tickets carry a disclaimer stating 'DISCLAIMER Please note full and final responsibility for damage or injury caused as a result of stray balls will remain with the player. Notices stating the above disclaimer have been put up at the golf hut and customers are made aware of this.
- There is a boundary fence around the course, which is approximately 12' high; this includes a thick hedge the density of which catches any stray balls. We are unable to raise the height of the fence due to complaints from Hotels, as this would restrict the views.
- Numerous signs have been placed on the outer perimeter of the boundary fence to make members of the public aware of their proximity to the golf course, when parking their vehicle on the free street parking areas adjacent to the park.
- Signs have been placed in various locations on the perimeter and within the park relating to playing out of hours.
- Zurich are aware that we do not intend to make any further changes or additions to our current inspections regime or signage. They are happy with this.
- Incident statements are available to complete, if required, at the golf hut and can be requested from our office.

Zurich our insurers have:-

- Closed all files of this nature over the years with no payments being made to claimants.
- Confirmed that we are taking all appropriate action to avoid incidents recurring.
- Advised claimants that ultimately, our we cannot be held liable for the actions of an independent golfer. In light of the information, we provide Zurich with, they do not consider that incidents of this nature have been caused by an act of negligence nor breach of statutory duty by us.

Note: Castles & Coasts have changed their boundary between Hope Park and Greta Gardens recently after undertaking extensive tree work.





CAUTION



DO NOT OVERSTRIKE THE BALL

HOPE PARK TRUST

**PLAYING OUT OF HOURS WILL BE
CLASSED AS TRESPASSING AND
MAY RESULT IN PROSECUTION**

Charitable Trust NO 503465

BUDGET ESTIMATES 2024/2025 - DRAFT

	ACTUAL 22/23	AGREED Budget 23/24	Estimated Out Turn 23/24	DRAFT Budget 24/25	£ Agreed 23/24 to draft 24/25	Inc/red Agreed 23/24 to draft 24/25	% Inc/red Agreed 23/24 to draft 24/25
Expenditure:							
Golf Cups & tee Mats	255	600	600	600	-	-	-
Tools	791	1,500	1,500	1,500	-	-	-
Materials	1,523	2,000	2,000	2,500	500	25.0	
Maintenance	1,001	2,000	2,000	2,000	-	-	-
Repairs - Paths/fences	5,000	6,000	6,000	5,000	1,000	16.7	
Repairs - Buildings	1,195	1,600	1,600	2,000	400	25.0	
Repairs - Course	1,099	1,500	1,500	1,500	-	-	-
Repairs - Machinery	2,231	2,500	2,500	2,700	200	8.0	
Repairs - Van service/repairs	999	1,000	1,000	1,000	-	-	-
Fuel and licences	2,471	5,000	4,000	4,500	500	10.0	
Plants & Compost	1,876	4,000	4,000	4,000	-	-	-
Trees and shrubs	584	800	600	600	200	25.0	
Fertilisers	750	850	850	850	-	-	-
Electricity and heating oil	826	2,500	3,500	4,000	1,500	60.0	
Water rates	216	600	700	700	100	16.7	
Wages (Gardeners)	43,184	47,985	43,100	57,062	9,077	18.9	
Wages (Management)	22,409	24,817	22,814	24,811	6	0.0	
Wages (Cleaner)	-	-	400	800	800	-	-
Admin and on costs	26,685	28,418	30,000	32,000	3,582	12.6	
Insurance (including Trustees Indemnity)	3,212	4,400	3,800	4,400	-	-	-
Telephone	288	400	500	500	100	25.0	
Advertising - Including Staff Recruitment	313	600	450	600	-	-	-
Trade Refuse Collection	923	1,206	1,500	1,800	594	49.3	
STAFF Training costs	484	1,100	1,100	2,100	1,000	90.9	
Staff Recognition	500	250	250	250	-	-	-
Workwear	1,000	1,500	1,500	1,500	-	-	-
Equipment	-	400	400	400	-	-	-
Audit Fee & Accounts Preparation	875	850	875	900	50	5.9	
Bird/squirrel feeding station	292	400	350	400	-	-	-
Contingency	1,500	3,000	3,000	2,500	500	16.7	
Health and Safety	680	800	800	800	-	-	-
Computer equipment & subscriptions	326	800	800	800	-	-	-
Web & Internet Costs	590	800	975	500	300	37.5	
Tree Work & Surveys	2,450	2,500	2,500	2,800	300	12.0	
Professional Fees	50	500	250	250	250	50.0	
Signs Expense	350	400	400	400	-	-	-
Drainage (filling) work to fairway	-	1,000	1,000	1,000	-	-	-
Contribution to future Hire Purchase/Capital spend - Earmarked	-	1,600	1,600	1,600	-	-	-
Contribution to future Parks Van - Hire Purchase - Earmarked	-	4,100	4,100	4,100	-	-	-
Climate Change costs	429	700	700	700	-	-	-
Sewage Pumps - Essential maintenance	2,960	-	-	1,000	1,000	-	-
Contribution to Building Fund	1,000	1,000	1,000	1,000	-	-	-
Contribution to Development & Equip Fund	-	-	-	1,000	1,000	-	-
TRUSTEE Training Costs	-	-	-	480	480	-	-
TOTAL EXPENDITURE:	131,677	161,976	156,514	178,423	16,447	10.2	

	ACTUAL 22/23	AGREED Budget 23/24	Estimated Out Turn 23/24	DRAFT Budget 24/25	£ Agreed 23/24 to draft 24/25	Inc/red Agreed 23/24 to draft 24/25	% Inc/red Agreed 23/24 to draft 24/25
Income:							
Games - licence to Occupy	156,050	171,030	171,030	181,292	10,262	6.0	
Rent for Buildings - Café, Golf Hut & Toilets	23,000	25,000	25,000	25,000	-	-	
Bank/investment interest	47	-	200	4,500	4,500	-	
Donations & Money Spinner - General Fund	125	300	150	150	150	50.0	
Bird/Squirrel Feed Station Donations	863	200	300	300	100	50.0	
Hire of Park	901	550	950	900	350	63.6	
Max Donations - General Fund - Designated	41,418	10,000	6,000	6,000	4,000	40.0	
Gift Aid/Just Giving	201	150	400	300	150	100.0	
TOTAL INCOME:	222,105	207,230	204,030	218,442	11,212	5.4	
SURPLUS/deficit	96,428	45,254	47,516	40,019	5,235	11.8	

Development & Equipment Fund - Expenditure Required 2024/2025	
Change Iseki (as 7 years old)	15,000

Building Fund - Expenditure Required 2024/2025	
Demolition of Old Workshop	15,000

Max the Miracle Dog donations - GENERAL FUND	
Balance as at 31st March 2023	38,521
Expenditure	
Transfer	
Income	5,632
Balance to date	44,153

Designated/Restricted Fund Balances as at 30/09/2023		
Development & Equipment Fund	42,422	(less funds required above)
Building Fund	26,519	(less funds required above)
Memorial Seats & Tree Fund	1,398	
Woodland Walk Grant - Restricted	5,158	(less new trailer E2700 - purchased October)
(plus free reserves)		

EARMARKED Funds	
Contribution to future Hire Purchase/Capital spend - Earmarked	1600
Contribution to future Parks Van - Hire Purchase	4100
Expenditure	0 (-)
Income	0 (+)
Balance to date	5700

FITZ PARK

BUDGET ESTIMATES 2024/2025 - DRAFT

	ACTUAL 22/23	AGREED Budget 23/24	Estimated Out Turn 23/24	DRAFT Budget 24/25	£ Inc/red Agreed 23/24 to draft 24/25	% Inc/red Agreed 23/24 to draft 24/25
Expenditure:						
Materials	2,356	3,000	3,000	3,000	-	-
Games Equipment - Including CSA	193	300	300	300	-	-
Repairs - Paths, fences & walls	2,880	5,000	5,000	5,000	-	-
Repairs - Buildings	1,359	3,000	3,000	3,000	-	-
Repairs - Greens and courts	2,325	3,000	3,000	3,000	-	-
Repairs & Maintenance - children's play area	8,408	8,500	8,500	7,000	1,500	17.6
Repairs - Bridges (Wivell & Knights)	-	250	250	250	-	-
Trade refuse	2,391	2,600	3,100	4,000	1,400	53.8
Plants, trees & shrubs	473	500	500	500	-	-
Fertiliser	1,100	1,500	1,500	1,500	-	-
Electricity	3,606	3,200	4,400	5,500	2,300	71.9
CSA Electricity	422	800	800	1,000	200	25.0
CSA Expenditure	823	1,100	1,100	1,100	-	-
Water Rates	680	1,000	2,000	3,000	2,000	200.0
Wages (Management)	23,715	24,817	22,814	24,811	6	0.0
Wages, NI & SA (Snr Gardener & Gardener & Grounds Maint)	81,252	93,652	79,792	89,624	4,028	4.3
Wages - Cleaner	-	-	400	800	800	-
Grass cutting - outside contract - inc Townsfield from 2024	6,500	9,220	8,500	9,220	-	-
Admin and on costs	26,685	28,418	30,000	32,000	3,582	12.6
Insurance	7,200	7,200	6,218	7,200	-	-
Advertising & Staff Recruitment	333	700	700	700	-	-
Car Park - Management Fee & Maintenance	10,368	8,500	10,000	11,000	2,500	29.4
Audit fee & Accounts Preparation	875	850	875	875	25	2.9
Tools	389	1,000	1,000	1,800	800	80.0
Health and Safety	350	400	400	400	-	-
Sinking Fund	15,000	7,500	7,500	12,500	5,000	-
Signs Expense	700	700	700	700	-	-
Tree Work - inc Townsfield from 2024	2,192	4,000	4,000	4,000	-	-
Workwear	1,047	1,600	1,600	1,600	-	-
Contingency	2,501	2,500	2,500	2,500	-	-
Professional Fees	498	8,000	8,000	8,000	-	-
Maintenance	2,172	2,000	2,000	2,500	500	25.0
BMX Track Expenditure	689	1,000	500	500	500	50.0
Bank Charges	433	600	400	500	100	16.7
STAFF Training	544	1,000	1,000	1,500	500	50.0
Staff Recognition	-	250	250	250	-	-
Fuel	2,800	3,500	3,500	3,500	-	-
Repairs - Machinery	1,040	1,100	1,100	1,500	400	36.4
Platinum Jubilee - Tree Planting	500	-	-	-	-	-
Outdoor Gym	415	150	150	200	50	33.3
Goodbox Charges	10	-	-	-	-	#DIV/0!
Climate Change costs	743	1,000	1,000	1,000	-	-
Townsfield	0	0	0	2800	2800	0.00
Trustee Training	0	0	0	480	480	0.00
Internet & O365	0	0	0	1115	1115	0.00
Station Road Railings - Painting	0	0	0	6000	6000	0.00
Total Expenditure:	215,904	243,407	231,349	257,330	13,923	5.7

	ACTUAL 22/23	AGREED Budget 23/24	Estimated Out Turn 23/24	DRAFT Budget 24/25	£ Inc/red Agreed 23/24 to draft 24/25	% Inc/red Agreed 23/24 to draft 24/25
Income:						
Licence Fee - Games & Catering	2,819	4,000	4,200	4,200	200	-
Café HNW - Utilities	1,190	1,600	1,500	2,500	900	-
Crosthwaite Road Car Park	44,225	28,000	40,000	40,000	12,000	42.9
Wayleaves	33	33	33	33	-	-
Insurance Reimbursements	1,111	1,400	1,245	1,400	-	-
Hire of Fitz Park	7,092	1,000	929	1,000	-	-
Donations	918	200	100	100	100	50.0
Tennis Club - Licence Agreement	1,343	1,300	1,473	1,500	200	15.4
Football Club - Lease	1,000	1,000	1,000	1,000	-	-
Car Park Levy - Football Club	11,975	8,000	11,225	10,000	2,000	25.0
CSA Electricity	-	500	275	400	100	20.0
Play Area Donations	407	300	300	300	-	-
Bank/Investment Interest & Loyalty Reward	101	100	200	1,000	900	900.0
Gift Aid/Just Giving	2,927	1,000	200	200	800	-
Ailerdale Lottery	750	400	400	400	-	-
Recharge of grasscutting to Townsfield	-	1,000	1,000	-	1,000	-
NEW - Licence Agreement - TBC	-	-	-	-	-	-
Total Income:	71,010	49,833	64,080	64,033	14,200	28.5

NET EXPENDITURE DEFICIT	144,894	- 193,574	- 167,269	- 193,297	277	0.1
TOTAL TO BE PAID TO FITZ IN TWO HALVES FROM KYC WHEN PRECEPT PAID		- 193,574		- 193,297		

Fitz Developments - Prof Fees (Revenue Budget above) & Sinking Fund	
Professional Fees - Expenditure	8,000.00
Sinking Fund - Expenditure	3,365.00
Total Expenditure to Date	11,365.00

As agreed at Sept 2023 Trust

Designated Fund & Project Balances	
Sinking Fund	191,383
BMX Track	652
Memorials Fund - Trees & Benches	1,536
Future Developments Fund	13,914
Sensory Garden (Wivell Park)	1,834
Flood Recovery Fund	-
CCP Resilience Grant	-
Outdoor Gym	2,911
Tree Carving	441
Pups Shelter	-
CCC Bike Rack	-

Budget 1st April 2023 to 31st March 2024

Budget Summary as at 30 September 2023

2nd Quarter

Expenditure:	AGREED Budget 23/24	Expenditure to 30.09.23	% of budget spent
Golf Cups & tee Mats	600	9	1.50
Tools	1,500	254	16.93
Materials	2,000	196	9.80
Maintenance	2,000	195	9.75
Repairs - Paths/fences	6,000	-	0.00
Repairs - Buildings	1,600	973	60.81
Repairs - Course	1,500	1,030	68.67
Repairs - Machinery	2,500	766	30.64
Repairs - Van service/repairs	1,000	623	62.30
Fuel and licences	5,000	1,495	29.90
Plants & Compost	4,000	1,709	42.73
Trees and shrubs	800	60	7.50
Fertilisers	850	177	20.82
Electricity and heating oil	2,500	213	8.52
Water rates	600	177	29.50
Wages (Gardeners)	47,985	18,577	38.71
Wages (Management)	24,817	11,429	46.05
Admin and on costs	28,418	12,680	44.62
Insurance (including Trustees Indemnity)	4,400	2,871	65.25
Telephone	400	177	44.25
Advertising - Including Staff Recruitment	600	-	0.00
Trade Refuse Collection	1,206	506	41.96
Training costs	1,100	200	18.18
Staff Recognition	250	182	72.80
Workwear	1,500	523	34.87
Equipment	400	-	0.00
Audit Fee & Accounts Preparation	850	-	0.00
Bird/squirrel feeding station	400	162	40.50
Contingency	3,000	-	0.00
Health and Safety	800	141	17.63
Computer equipment & subscriptions	800	67	8.38
Web & Internet Costs	800	769	96.13
Tree Work & Surveys	2,500	-	0.00
Professional Fees	500	-	0.00
Signs Expense	400	373	93.25
Drainage (filling) work to fairway	1,000	-	0.00
Contribution to future Hire Purchase	1,600	1,600	100.00
Contribution to future Parks Van - Hire Purchase	4,100	4,100	100.00
Climate Change costs	700	398	56.86
Contribution to Building Fund	1,000	1,000	100.00
TOTAL EXPENDITURE:	161,976	63,632	39.28

Income:	AGREED Budget 23/24	Actual Income to 30.09.23	% of budget Income
Games - Licence to Occupy	171,030	143,025	83.63
Rent for Buildings - Café, Golf Hut & Toilets	25,000	21,429	85.72
Bank interest	-	86	0.00
Donations & Money Spinner - General Fund	300	50	16.67
Bird/Squirrel Feed Station Donations	200	241	120.50
Hire of Park	550	947	172.18
Max Donations - General Fund	10,000	5,632	56.32
Gift Aid/Just Giving	150	362	241.33
TOTAL INCOME:	207,230	171,772	82.89

SURPLUS/deficit	45,254	108,140
------------------------	---------------	----------------

Max the Miracle Dog donations - GENERAL FUND	
Balance as at 31st March 2023	38,521
Expenditure	(-)
Transfer	-
Income	5,632 (+)
Balance to date	44,153

Designated/Restricted Fund Balances	
Development & Equipment Fund	19,422
Building Fund	16,519
Memorial Seats & Tree Fund	4,398
Woodland Walk Grant - Restricted	5,158

KESWICK PARKS CHARITABLE TRUSTS

9 NOVEMBER 2023

Flood Strategy

In 2017, following Storm Desmond and the extensive flooding caused within Fitz Park, a Flood Strategy Plan was commissioned from Rubicon Project Consultancy, to look at a detailed post flood appraisal of flow routes and damage sustained in Fitz Park, as well as proposals for mitigation and reactive measure to protect park assets.

This document is attached to this report for Trustees to see what was recommended at the time.

Since that point, the team at Keswick Parks have undertaken a good deal of remedial work as set out in the report. There has also been work done by the Environment Agency, as well as pressure put on United Utilities by the likes of Keswick Flood Action Group in order to manage the storm capacity at Thirlmere Reservoir, which was one of the major causes of the devastation caused by Storm Desmond.

A detailed report on the impact of Storm Desmond on the whole of Keswick was undertaken by the Environment Agency in 2016, and is available here

<https://cumbria.gov.uk/elibrary/Content/Internet/544/3887/6729/6730/4271394526.PDF>

The work that has been done in the time since includes:

Upper Fitz Park

- Footpaths replaced in Upper Fitz Park in order to ensure a smoother flow of water into the area;
- Planting has been undertaken and managed to enable the catching of debris as it washes into Upper Fitz;
- Benches/table tennis table/ have been installed to aid in catching debris as it washes in (these are all insured);
- Planting and wooden posts have been put in from of the tennis court fencing in order to protect the fences;
- Close monitoring of flood alerts to enable machinery in the storage area to be moved to higher ground, as well as seeking to build a new store, which would allow machinery to be placed higher up;
- Trees and large shrubs removed close to Silver Bridge and perennial planting added to allow free flowing of flood water under the bridge. The perennial planting is cut back to ground level through the autumn months to provide a clear path for flood water to escape more freely.

Lower Fitz Park

- Knights Bridge being replaced at a higher level, hopefully mitigating the risk of it being washed away in the future (this was covered by insurance);
- Footpaths replaced to ensure there is the loading capacity for larger vehicles, also levelled off to spread the flow of water evenly;
- Benches and trees have been placed along the riverside, again to attempt to catch large debris before it washes into the park.

Both the Parks Manager and Responsible Financial Officer receive flood alerts, and would be aware of the situation should it appear that a flood is possible. Machinery would be moved to higher ground as soon as possible.

All of the sports clubs who have buildings in Fitz Park are insured against flooding, as they form part of our insurance. They have to some degree prepared for flooding should it occur.

We don't know what will happen the next time there is a flood, as until one occurs, we don't know the impact of all the changes that have been put in place, but we hope that the mitigations put in will reduce the cost of out of pocket costs that are not covered by insurance claims in the event of a flood.

Hopefully this will aid Trustees in deciding how much is appropriate to leave in the Sinking Fund.

Vivien Little

17 October 2023

Keswick Fitz Park

Flood Strategy Part 1

May 2017



Keswick Fitz Park Aerial View © Google Earth

Keswick Town Council
50 Main Street
Keswick
Cumbria
CA12 5JS

Rubicon Project Consultancy Ltd

Version	Prepared by	Non-Technical Review by	Accepted by	Date
1 st Draft	Rachel Gerrard	G&J Tunnicliffe Wilson	n/a	23 May 2017
2 nd Draft	Rachel Gerrard	G&J Tunnicliffe Wilson	n/a	9 June 2017
Final Copy	Rachel Gerrard	Phil Gerrard	Keswick Town Council	30 June 2017

Rubicon Project Consultancy Ltd

Contents

Flood Strategy	1
Location.....	1
Flood History	2
Modelled Flood Risk.....	3
2015 Keswick Flood Investigation Report.....	5
2015 Flood Impact in Fitz Park	6
Flood Timeline.....	7
Flood Flow Routes / Mechanisms.....	9
Flood Risk Future	11
Flood Mitigation/Resilience Proposals	13
Flood Impacts on surroundings	16
Flood Plan	16
Residual Flood Risk.....	17
Appendices	18
Appendix 1: Additional Information	18
Appendix 2: Data from Environment Agency	18

Figures

Figure 1 Keswick Fitz Park	1
Figure 2 River Greta Flood Plain	2
Figure 3 Modelled Flood Outlines in Upper Fitz Park.....	3
Figure 4 Modelled Flood Outlines in Lower Fitz Park.....	4
Figure 5 Upper Fitz Park Bowling club aftermath / clean-up	6
Figure 6 Lower Fitz Park aftermath / clean-up	6
Figure 7 Aerial Photo Fitz Park midday 6 December 2015.....	8
Figure 8 Upper Fitz Park Flow Routes	9
Figure 9 Flood Photos from Upper Fitz Park.....	9
Figure 10 Lower Fitz Park Flow Routes	10
Figure 11 Plan of Proposals for Upper Fitz Park.....	11
Figure 12 Plan of Proposals for Lower Fitz Park.....	12

Tables

Table 1 Flood level and return period (taken from EA dataset of defended model).....	4
Table 2 Flood Timeline of Key Events	7
Table 3 Upper Fitz Park Flood Potential Mitigation Measures.....	13
Table 4 Lower Fitz Park Flood Potential Mitigation Measures.....	15
Table 5 Flood Plan	16

Flood Strategy

Fitz Park Keswick experiences flooding during large flows on the River Greta which cause damage to the park's amenities. This flooding causes additional costs for the upkeep of the park. The Flood Strategy has been split into two parts with Part 1 providing:

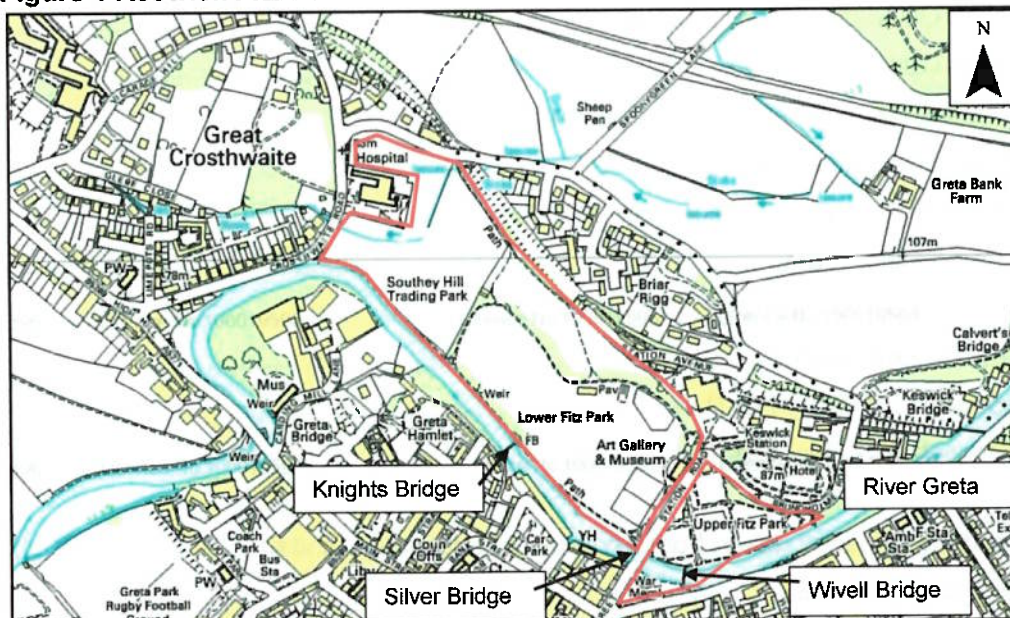
- A detailed post flood appraisal of flow routes and damage sustained within the 2015 flood event.
- Proposals for permanent mitigation measures e.g. resilience measures for buildings, landscaping and planting, to reduce the damage caused by scour and debris accumulation through-out the park.
- Proposals for reactive measures to protect specific park assets. This would include the Pay and Display car park and the staff hut, but would exclude the sport specific assets within the park.
- Flood Plan giving the before, during and after actions required to reduce the impact of a flood event.

Part 2, if required, could provide Asset specific visual surveys and flood plans for the main stakeholder organisations within the park where required.

Location

Fitz Park Keswick is located at NGR NY268236 with the River Greta providing the South-West boundary. The park is approximately 750m by 200m encompassing many activities and users from football and cricket to bowling, tennis and the Keswick Museum. The park connects Crosthwaite Road to the north and Brundholme Road to the south with Station Road cutting through splitting the park into Lower Fitz Park to the North of Station Road and Upper Fitz Park to the South of Station Road.

Figure 1 Keswick Fitz Park



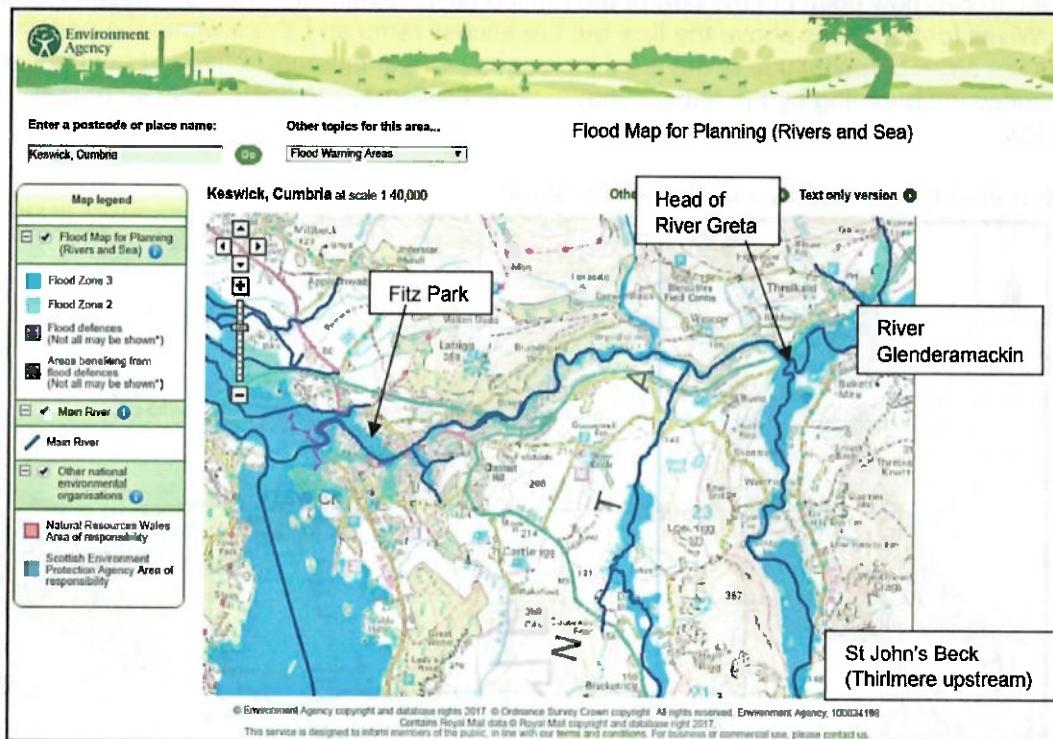
Fitz Park in Keswick is on the floodplain of the River Greta with residential properties of the town built to the river's edge on the opposite bank. The Greta originates at Threlkeld approximately 5km to the east of Keswick where two watercourses the Glenderamakin and St John's Beck combine. The source of the River Greta covers a large area from the head of the Glenderamackin on Blencathera to the East and the head of St John's Beck to the south with Thirlmere Reservoir in its catchment.

Flood History

Keswick has a history of flooding with the first recorded flooding in 1822. Since then, approximately 20 significant flood events have been recorded. Three major events have occurred recently in 2005, 2009 and 2015, causing damage to Fitz Park Keswick.

The River Greta originates at the confluence of St John's Beck and The River Glenderamackin, then flows down a relatively tight gorge towards Keswick. The first opening up of the valley into natural flood plain is found when the River Greta flows alongside Fitz Park. During the 2015 flood event all available floodplain upstream was inundated, with bridges and roads washed away with the force of the flows.

Figure 2 River Greta Flood Plain



Where the flows are constrained they are faster and can carry more debris. When the flows have more space, for example where there is flood plain, the flows slow down and cannot carry so much debris so debris is deposited.

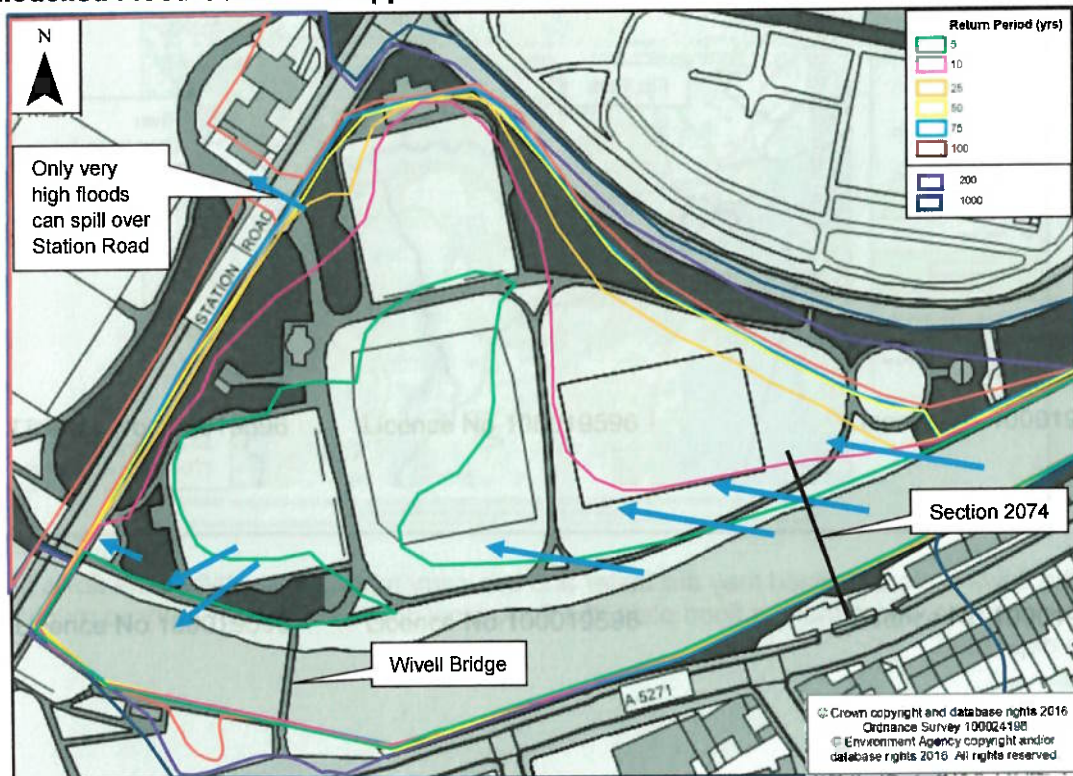
Modelled Flood Risk

The Environment Agency have carried out extensive hydraulic modelling of the River Greta, which provides good information for return periods of modelled floods for the Fitz Park area.

The return period of a flood is how long you might expect it to be before a flood next happens. It may in fact occur much sooner or later than that, so it is a way of communicating the chance, or risk, of it happening in any particular year. A 10 year return period means you expect one flood in 10 years, so there is a chance of 1 in 10, or 10%, of having a flood in any particular year - even if you just had a flood the previous year. Over a very long period you would find there was one flood for every 10 years, but you would not expect them to appear regularly every 10 years.

In Upper Fitz Park the lower order floods enter and exit the park, without overflowing Station Road. The park provides an overflow point but the flow of the functional floodplain is limited by Station Road. The deck of the Wivell foot bridge is above the flow but the access ramp and steps within the park interrupt the flow. As the order of magnitude of the flood increases more of the park is flooded but the flood is eventually limited in spreading by the natural shape of the hillside as the flood depth increases. See Figure 3 below.

Figure 3 Modelled Flood Outlines in Upper Fitz Park



In Lower Fitz Park the floods follow a similar outline over the football pitches with the depth increasing without covering a greater area, the floods being limited by the rise of the land. The Multi Use Games Area, Museum and playground sit slightly higher in the floodplain and are therefore only affected by higher order floods. See Figure 4.

Figure 4 Modelled Flood Outlines in Lower Fitz Park

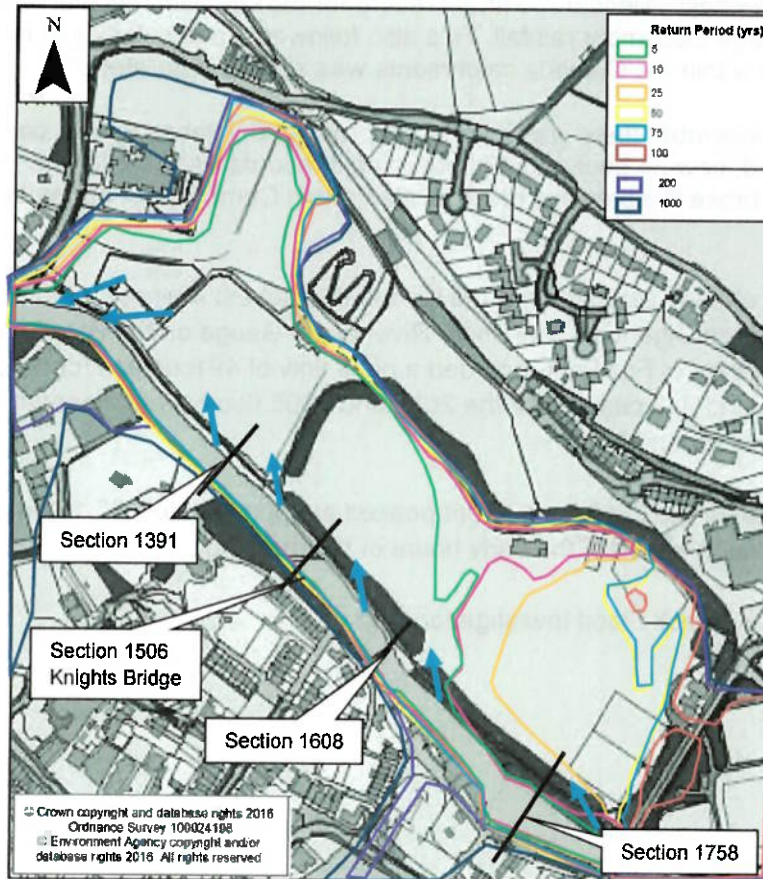


Table 1 Flood level and return period (taken from EA dataset of defended model)

Return Period	River Cross section - Flood Level m AOD / Flood depth cm									
	1391	1391	1506	1506	1608	1608	1758	1758	2074	2074
5	80.28	-	80.77	27 cm	81.23	13 cm	81.87	-	83.72	-
10	80.55	15 cm	80.92	42 cm	81.34	24 cm	82.09	-	83.98	-
25	80.89	49 cm	81.14	64 cm	81.46	36 cm	82.37	27 cm	84.28	28 cm
50	81.19	79 cm	81.38	88 cm	81.61	39 cm	82.56	46 cm	84.5	50 cm
100	81.50	110 cm	81.66	116 cm	81.90	80 cm	82.73	63 cm	84.73	73 cm
200	81.78	138 cm	81.91	141 cm	82.21	111 cm	82.86	76 cm	84.92	92 cm
1000	82.29	189 cm	82.42	192 cm	82.89	179 cm	83.13	103 cm	85.50	150 cm
Park level	80.4m AOD		80.5m AOD		81.1m AOD		82.1m AOD		84.0m AOD	

At cross section 1391 the flood water does not over-top the riverbank in the 5 year flood but floodwaters do flow across the park, from over-topping the bank upstream of Knights Bridge.

2015 Keswick Flood Investigation Report

The 2015 Flood Event through Keswick has been documented in detail in the Keswick Flood Investigation Report carried out by the Environment Agency and published in May 2016. Below are a few pertinent abstracts from the report. A full copy can be found on the Internet.

December 2015 was the wettest calendar month on record for the UK, with much of northern England receiving double the average December rainfall. This also followed a particularly wet November and as such, much of the ground within the Cumbria catchments was already saturated. **

From the 4th to the 7th of December there was a period of prolonged, intense rainfall caused by Storm Desmond. Over this period, new 24 hour and 48 hour rainfall records were set for the UK. Both of these were within Cumbria and broke the previous records, also within Cumbria, set during the November 2009 floods. **

The prolonged rainfall on already saturated ground lead to the highest ever recorded flood levels on the River Greta. The Environment Agency's Low Briery River Level Gauge on the River Greta approximately 1.5km upstream of Fitz Park recorded a peak flow of 491cumecs for the 2015 flood compared to 239 cumecs and 242 cumecs for the 2009 and 2005 flood events respectively. Cumecs is a measure of flow in m³ per second.**

The river level of the Greta for the 2015 flood event peaked at approximately 22:15 on Saturday 5 December with flood warnings issued in the early hours of the morning.

** Information taken from Keswick Flood Investigation Report

2015 Flood Impact in Fitz Park

Due to the very high river levels down the constrained gorge of the River Greta, a great deal of erosion upstream of Keswick was caused by the floods. The Keswick to Threlkeld railway footpath lost two bridges and erosion of the river banks destabilised large amounts of river gravels causing landslides. Upstream at Low Briery the Holiday Park lost static caravans into the river and Forge Bridge partially collapsed. The damage to the Park's assets has been documented by most if not all of the Stakeholders that use the park. Below is a brief summery of the damage caused.

Debris were washed down and, as flows spread and slowed over Fitz Park, large amounts of gravel/boulders and sediment were deposited on the park, including a significant amount of woody debris and manmade objects. Trees, benches and fences, across the floodplain, caught debris. The tennis court fencing in Upper Fitz Park was flattened by the accumulation of debris. Many tonnes of trees and other more bouyant debris were deposited on the car parking, area at the north (downstream) end of the park.

Figure 5 Upper Fitz Park Bowling club aftermath / clean-up



The Bowling Club cleared the fine silt by hand from their Green within 48 hours using snow shovels.

Figure 6 Lower Fitz Park aftermath / clean-up



Riverside path

Football pitches

Multi Use Games Area

Approximately 700 tonnes of sediment was scraped off the cricket pitch and a further 4000 tonnes off the football pitches. Footpaths, car parks and grass playing surfaces were damaged by scour and debris accumulation. Many volunteers quickly cleared the Football pitches and Cricket Ground of silt but even with this quick action turf needed reseeding and new drainage installing. Much of the silt was not removed off site but spread on the high ground between the Cricket Pavillion and redundant railwayline on the park boundary.

The high river levels washed away Knights Bridge, the footbridge connecting Lower Fitz Park to Stanger Street. (This is being replaced under insurance at a higher level.) The access to Wivell (Memorial) Footbridge (which was replaced following the 2005 floods) in Upper Fitz Park was damaged by scour and debris.

The Football Clubhouse, Cricket Pavillion, Bowling Clubhouse and Games hut all flooded internally.

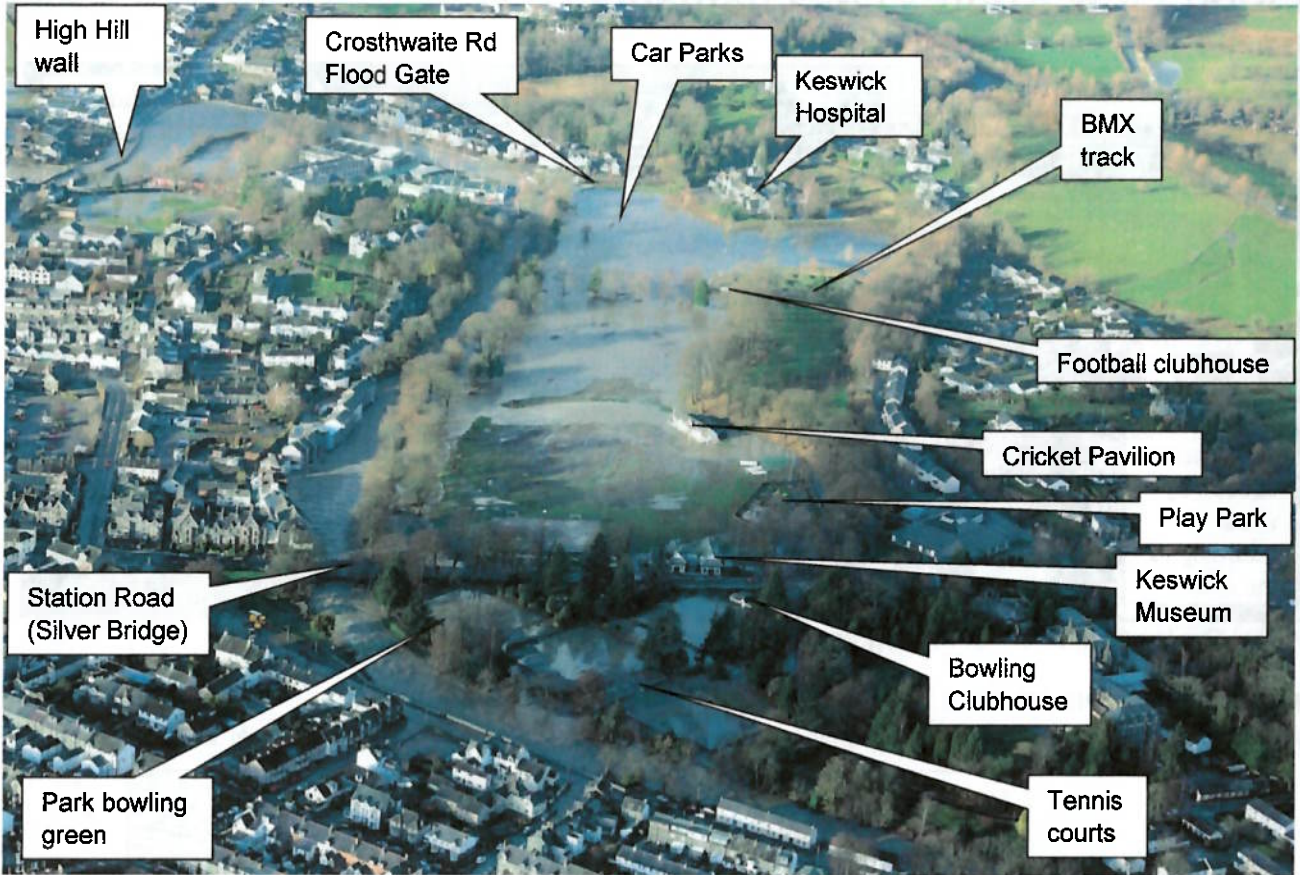
Flood Timeline

Table 2 below shows a timeline of key events surrounding the flooding of Fitz Park. Information provided by the Football Club, Bowling Club and the Environment Agency.

Table 2 Flood Timeline of Key Events

Friday 4 December 2015	Event
15:30	Flood Alert Issued
19:30	Flood Gates Closed on Crosthwaite Road
Saturday 5th December 2015	
02:30 – 06:10	Flood Warnings Issued
07:30	Football car park and fields are flooded to the entrance of the Hog House where equipment is stored. Football club members access via the high ground and move machinery and equipment to high ground above Club House.
11:21	Severe Flood Warnings Issued
13:00	Initial overtopping of flood defences on Crosthwaite Road (over the flood bank before overtopping the flood wall) Floodgate is leaking.
22:15	River Level Peaks on the Greta – 5.348m recorded on gauge at Greta Bridge.
Sunday 6th December 2015	
12:15 (approx.)	Peter Smith Aerial photograph of Fitz Park
14:00 (approx.)	Football Clubhouse accessible – clean up started
Sunday Evening	Flood waters subsided back into river channel
Monday 7 December 2015	
	Flood Gates reopened off Crosthwaite Road. Football Club access with machinery to begin removal of debris.
Tuesday 8 December 2015	
	National Trust Machines arrived to help at Football Club
	Bowling Club scrapes silt of Bowling Green by hand
Wednesday 9 December 2015	
	Machines scraping silt from Junior football fields
Sunday 13 December 2015	
	Volunteers and machines scraping silt from Cricket pitch and Football pitches and generally removing debris.

Figure 7 Aerial Photo Fitz Park midday 6 December 2015



Aerial Photos ©Peter Smith Photography / Environment Agency Data

Lower Fitz Park Flood Photos

Cricket Club 6 December 08:00 Football Club 6 December 12:40 From Station Rd 6 December 09:30



©www.robertrathbone.co.uk



©Ben Challis



©www.robertrathbone.co.uk

Upper Fitz Park Flood Photos

Wivell Bridge 6 December 08:00 Bowling Club 5 December 11:00 Station Road 6 December 08:00



©www.robertrathbone.co.uk



©Ben Challis



©www.robertrathbone.co.uk

Flood Flow Routes / Mechanisms

Figure 8 Upper Fitz Park Flow Routes



Aerial Photos ©Peter Smith Photography / Environment Agency Data

Figure 9 Flood Photos from Upper Fitz Park

From Penrith Road across the river 5 December 2015 10:50 Wivell Bridge 5 December 2015 14:42



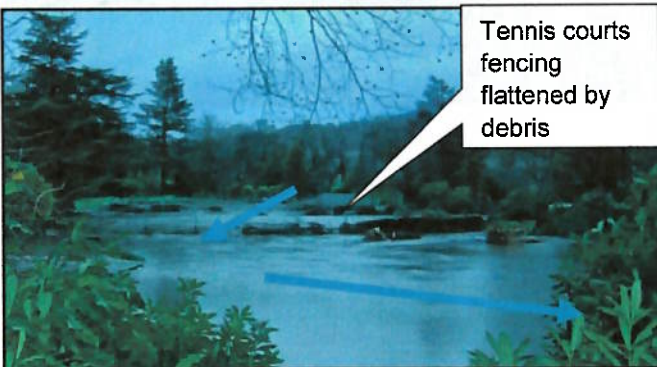
©Ben Challis

Tennis courts / bowling green 6 December 2015 09:35



©Ben Challis

Penrith Road 5 December 2015 18:25



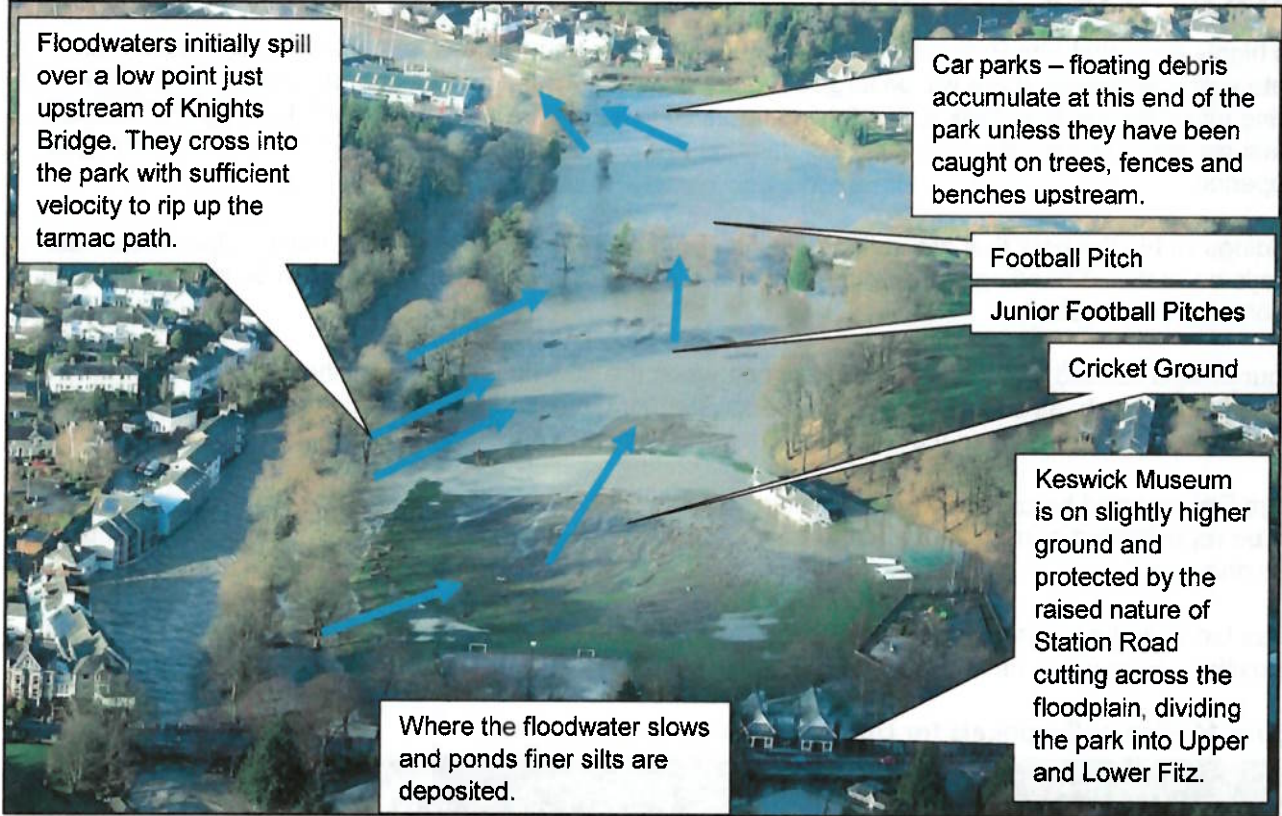
©Ben Challis



©www.robertrathbone.co.uk

Wivell Bridge was washed away during the 2005 flood in Keswick. The bridge was then replaced with a higher deck level and access ramps on both sides. The access ramp in the park narrows the flow path for the floodwater exiting back into the river downstream of the bridge, exacerbating erosion. The main obstruction to the flow along the floodplain through Upper and Lower Fitz Park is Station Road, as it is raised from the natural ground levels, blocking the flow routes along the flood plain.

Figure 10 Lower Fitz Park Flow Routes



November 2009 Flood Aerial photo



December 2015 Flood Aerial photo



Aerial Photos ©Peter Smith Photography / Environment Agency Data

The aftermath of the flooding was captured by local photographers.

Floating debris caught on bench & Football Club ©Ben Challis Cricket Club ©www.robertrathbone.co.uk



Knights Bridge into the lower park was washed away during the December 2015 flood and is being replaced at a higher level which will require a new larger access ramp within the park.

Flood Risk Future

It is highly likely that Fitz Park will flood in the future and, due to the now unstable nature of the River Greta valley upstream, there will be large volumes of debris washed down and deposited on the park during future floods. Fitz Park is floodplain and as such cannot be prevented from flooding but there are measures that can be taken to reduce the damage and enable easier clean up after the flood event has happened.

Buildings within the park that are at flood risk can be defended from flooding internally. Open areas will always be at risk of flooding but how the land floods and how debris is deposited can be influenced and to some level controlled.

Scour of land caused by flooding happens worst when the flow has a high velocity and there is a narrow gap to flow through, as seen in Upper Fitz Park. A continuous land level, adjacent to a river, will act like a weir, spreading the flow, as it overtops the riverbank into the floodplain.

Large Debris could be caught before causing damage. Fences and boundary ropes that catch debris can be repositioned or removed before a flood. Extra posts, put in to catch debris can protect assets from damage.

Grass land can be landscaped to level out hollows and mounds that slow the flow and provide areas for deposition. High value turf could be covered over to protect the surface from silts.

Figure 11 Plan of Proposals for Upper Fitz Park

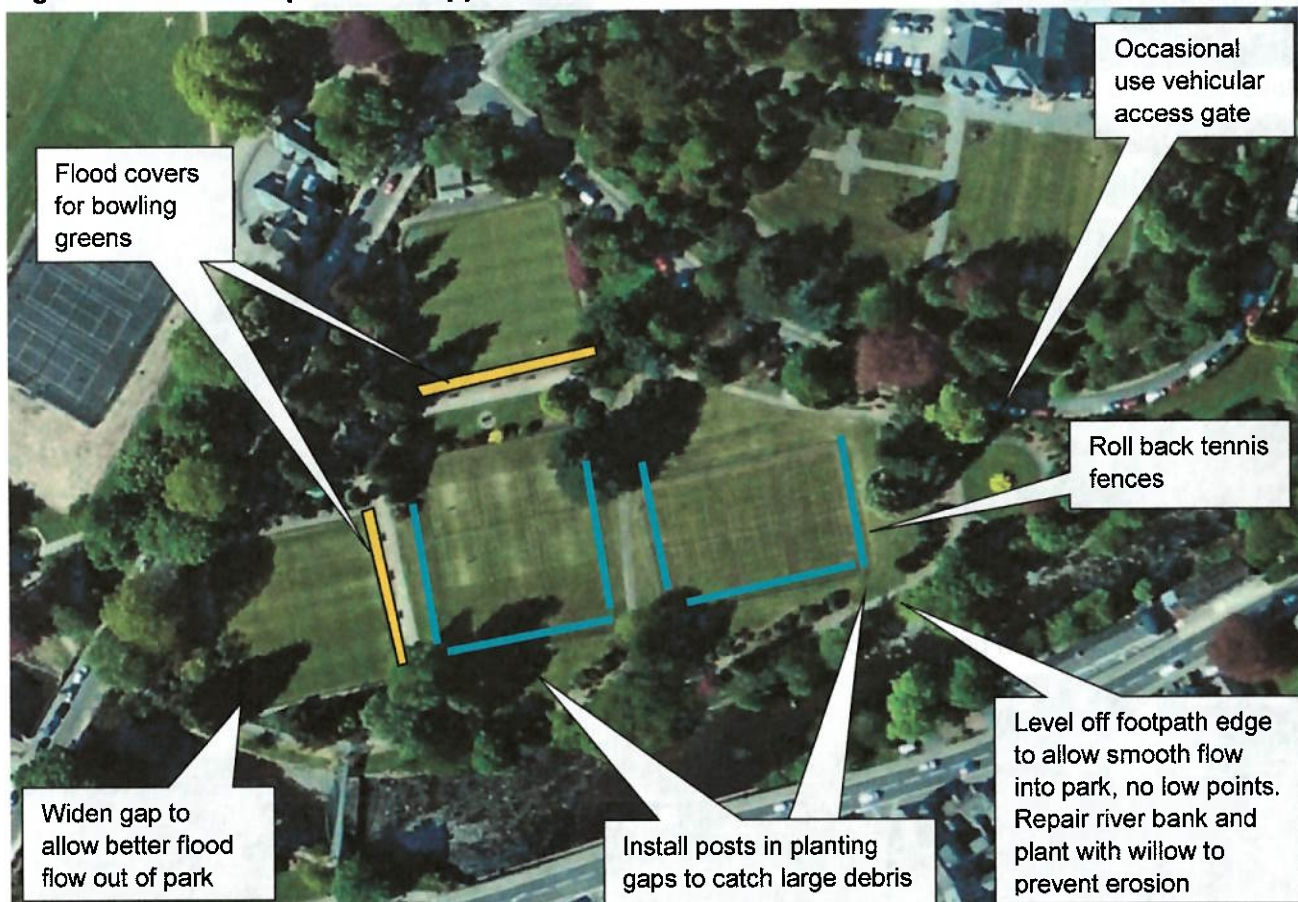


Image © Zoom Earth

Figure 12 Plan of Proposals for Lower Fitz Park

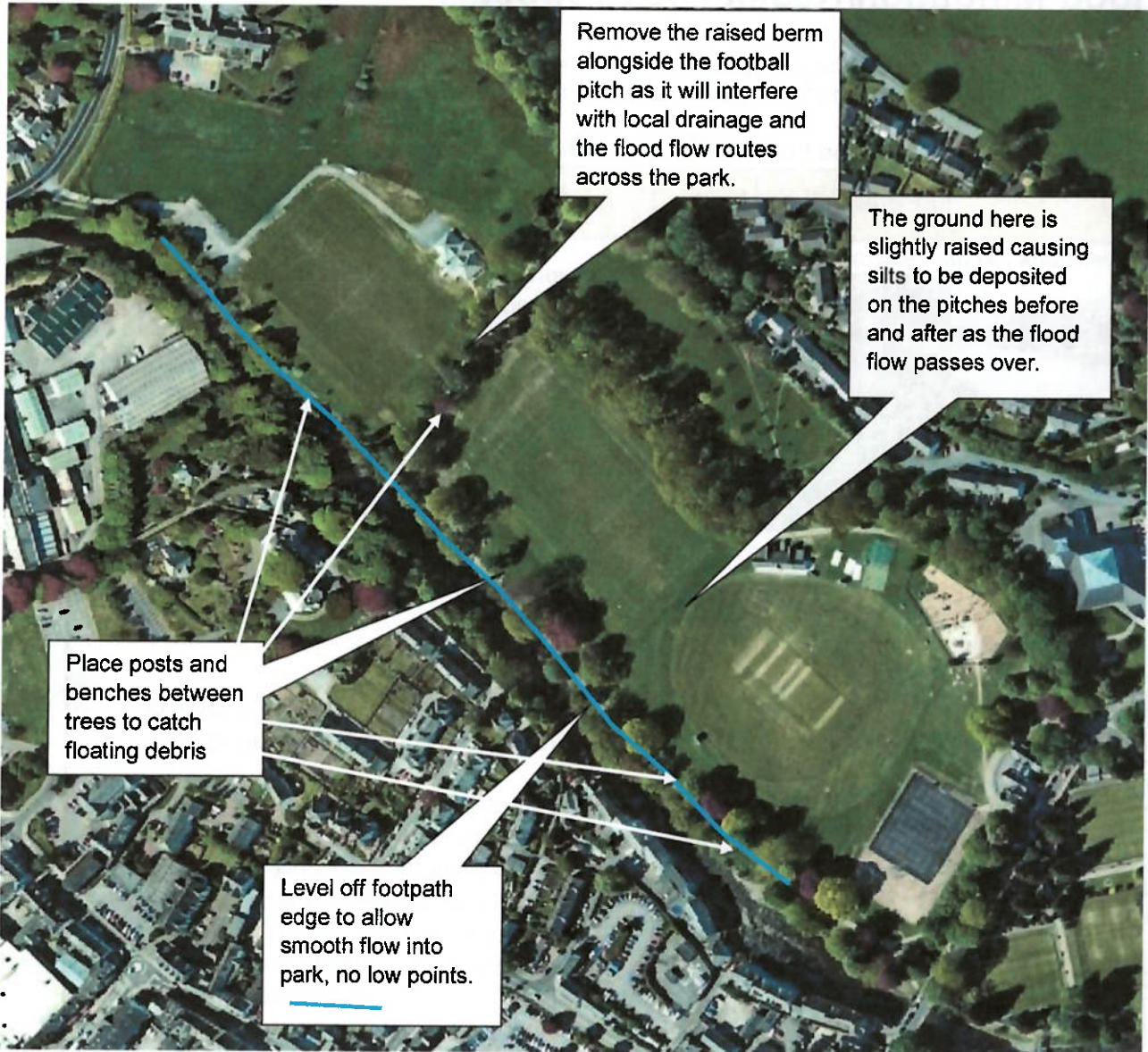

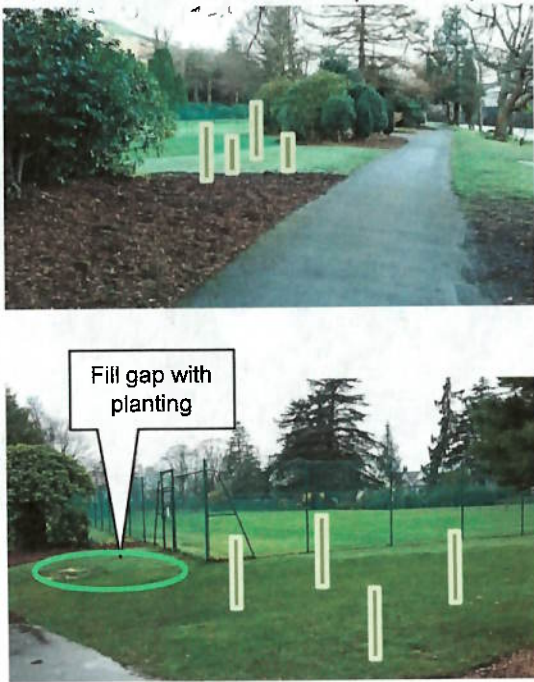



Image © Zoom Earth

Flood Mitigation/Resilience Proposals

The following tables details possible options that may be considered to reduce the post flood damage, loss of use and expense, noting that no consideration of financial viability has been made.

Table 3 Upper Fitz Park Flood Potential Mitigation Measures

Location	Flood Mitigation Proposal
<p>River bank footpath /berm.</p> 	<p>Fill in worn areas of river bank berm between footpath and river so as to allow the flood flow a smooth wide access across into the park. (Less focused flow = less scour).</p> <p>Plant willow in river bank to bind the bank together to prevent scour and wash out, coppice regularly to ensure strong root growth and keep vegetation small.</p>
<p>Planted border between footpath and park</p> 	<p>The planted border caught a large amount of debris in the 2015 flood but there are gaps.</p> <p>Provide a continuation of the floating debris catch along this line parallel to the river, this may be in the form of planting or posts driven into the ground. For example fence strainer posts half in half out to approximately 1m height will catch buoyant debris during a flood. The posts could be decorated or varied to provide interest/art/child play/memorials.</p>
<p>Bowling Greens</p> 	<p>Securely cover high value turf to protect from debris and fine silts to enable quicker return to use of facility avoiding the expense of relaying the playing surface. (may also work for the cricket square)</p>
<p>Footpaths</p>	<p>Ensure Footpaths have the width and loading</p>

Location	Flood Mitigation Proposal
	<p>capability for large vehicle access.</p>
<p>Upper Fitz Park Large vehicular access</p> 	<p>Currently vehicular access into the park is subject to a height limit off Station Road. In the event of a flood, larger vehicles and machinery may need access quickly, so an 'emergency/occasional use access' gate and ramp off Brundholme Road would be advantageous.</p>
<p>Tennis court fencing</p> 	<p>Modify the fencing connections to enable the fencing to be rolled back to a corner in the event of a flood. Or if not cost effective at this time, as the fencing as just been renewed, a sacrificial section of netting could be put up before a flood to catch the smaller debris.</p>
<p>Corner of Bowling green by the river</p> 	<p>Widen the flood flow path at this location as much as practicable so as to lessen the erosion forces of the flood water exiting the park. It would be preferable to remove the large tree but, if that is not possible, lowering the raised bed between the green and Silver bridge and changing planting would allow flood water to exit the Upper Fitz Park more easily.</p>
<p>Machinery Store</p> 	<p>Relocate the machinery store to higher ground or if not practicable, replace the store with a purpose built, flood proof store – concrete floor with concrete panel walls and flood doors.</p>
<p>In River/ On Banks.</p>	<p>Remove trees and bushes growing in the flood</p>







Location	Flood Mitigation Proposal
	<p>flow path along the river, particularly those that will reduce the capacity under Silver Bridge</p>
<p>Benches</p> 	<p>Install extra benches – these will catch flow debris provided they are installed securely. (This one survived the flooding intact)</p>

Table 4 Lower Fitz Park Flood Potential Mitigation Measures

Location	Flood Mitigation Proposal
<p>River bank footpath.</p> 	<p>Repair river training wall to a consistent level. Level off footpath to remove low sections which, when overtopping, cause scour to be focused. This will spread the flow wherever possible.</p>
<p>Footpaths</p> 	<p>Ensure Footpaths have the width and loading capability for large vehicle access.</p>
<p>Treeline alongside riverside footpath.</p> 	<p>Trees and benches and fences between the river and the grassed playing areas of the park caught large amounts of floating debris during the flood but there are gaps. Install large posts and benches in the flow path to approx. height of 1-1.5m to catch floating debris.</p>
<p>Grassland playing areas</p>	<p>Provide a swale for smaller flows through the park and elsewhere smooth over the dips and rises of the grassed areas to avoid focusing the flow paths. Remove the berm by football pitch.</p>
	

Areas of sensitive/high value turf could be covered to prevent fine siltation blocking the drainage mechanisms.

All users, with facilities in areas of flood risk, should have a Flood Plan in place, to ensure mitigations are put in place in the event of rising river levels. This plan should include the alerts and warnings from the Environment Agency.

Flood Impacts on surroundings

Work to help protect and reduce the impact within Fitz Park Keswick cannot have an effect on the flood defences and standard of defence that protects the town. Therefore constructing bunds or walls around the grassland assets would not be permitted, as that would impact on the town. Protecting buildings, from flooding internally, will not be detrimental to the flood capacity of the park and should be done wherever possible.

Flood Plan

Table 5 Flood Plan

Triggers	Action
Pre Flood	
Register for Flood Warnings from the Environment Agency	<p>All Stakeholders and interested parties should register for Alerts and Warnings. Each Stakeholder needs to decide who should receive the Environment Agency alerts /warnings. (more than one can register)</p> <p>Write / Agree Flood Plan actions / potential resources required</p> <ul style="list-style-type: none"> • Have pre-planned access routes so as to limit further damage /compaction of silts. • Coordinate with other park users agree work zones and access routes to avoid conflict and ensure safe working.
Flood Alert from the Environment Agency	<p>Be aware of rain and flood situation – it may be a flood to affect the park or it may not.</p> <p>Gather volunteers / staff to brief people in case there is a cause for action. Lead Stakeholders make teams aware of Flood Plans</p>
Crosthwaite Flood Gates closed by Environment Agency	<p>Ensure flood preparation is complete prior to losing access: Communication is Key</p> <p>Assign Flood Action Lead for the park and park stakeholders. Liaise with Keswick Flood Action Group who has direct contact with the Environment Agency.</p> <p>Upper Fitz Park – roll out protection over bowling greens, tennis court fences. Install flood protection in buildings. Move machinery/ equipment to high level/ground. Install flood protection measures on buildings.</p> <p>Lower Fitz Park – move machinery to higher ground. Take in boundary rope on Cricket Ground. Move equipment to high level / ground. Install flood protection measures on buildings.</p>

Triggers	Action
Flood Warning from the Environment Agency	Contact volunteers for potential post flood help.
Post Flood	
When waters have subsided	Access the park – Assess damage and potential resources required. Determine machinery and clean up requirements – Plan Clean Up Remove covers / Clean silt off all high value turf (preferably within 48 hours) – have pre-planned on-site temporary storage and off-site disposal of silt and river gravel debris. (Proactively Contact Aggregates companies) Remove and sort buoyant debris for disposal off site.

Residual Flood Risk

Even if buildings have flood protection water still may leak in but damage can be limited by thinking ahead and being prepared. Electric sockets should be positioned at a high level, soft furnishings can be hung from the ceiling, and carpets can be rolled and raised. Flood water that has been filtered through protection measures carries less silt and will be easier to clean up.

Appendices

Appendix 1: Additional Information

Photos from 2015 flood – on disk

Services plans

Old Maps

Appendix 2: Data from Environment Agency

Historic flood maps

Modelled Levels and Flows, 5-1000 flood outlines

Aerial photos of Flooding

KESWICK PARKS CHARITABLE TRUSTS
9 NOVEMBER 2023

Fitz Park Developments – Car Parking

At the Trust meeting in September, Trustees were concerned about potential increase in the number of cars using Fitz Park if the area beside the Museum were extended to allow car parking, especially if the Bowling Club is allowed to use there for their annual agreement instead of the area currently next to Café HNW. There was especial concern regarding liability if an accident were to happen involving a vehicle which belongs to a visitor for the Bowling Club.

As a result, I have drafted a Terms and Conditions of use for all users who intend to use a car in Fitz Park, based on the general Terms and Conditions of use for anyone who wishes to use the park for Events for Trustees to approve. This will be accompanied by numbered parking permits, so we can control the numbers of cars in the area. If this is abused in any way, we will lock the Fitz Park gates, and access will be denied to anyone who is not a member of staff.

Trustees are asked to consider the attached Terms and Conditions.

Vivien Little
23 October 2023



**TERMS AND CONDITIONS OF USE OF PARKING AREA IN LOWER FITZ PARK, STATION ROAD,
KESWICK**

The Fitz Park Charitable Trust agrees to the use of a specified parking area in Lower Fitz Park on the following conditions:

Vehicular access to Fitz Park is restricted to permit holders only whilst on club/museum business; permission is required from Fitz Park Trust to access the park for any other reason. The number of permits provided will be strictly controlled.

The following conditions relating to vehicle access to Fitz Park must be observed at all times:-

- Entry to the Park must be via the gates adjacent to Keswick Museum and Art Gallery;
- Gates must be opened and closed on entry and exit;
- Speed is restricted to **5mph**;
- Care must be taken regarding other park users, particularly children and cycles;
- A permit must be on display in the windscreen at all times;

Permit Holders must confirm that they hold full public liability insurance, or permits will be rescinded. A copy of the public liability must be sent to the Fitz Park Trust before permits are issued.

Permit holders will indemnify the Fitz Park Charitable Trust against all claims arising due to misuse of the parking area and whilst permit holders are within the perimeter of the park.

If it is discovered that the rules are not being adhered to, Fitz Park Trust reserves the right to lock the gate to prevent further abuse of these rules.

Vivien Little
Town Clerk and Trust Clerk

SIGNED ON BEHALF OF CLUB/ORGANISATION:

Name of Club/Organisation	
Name of Representative PRINT	
Signature of Representative	
Position	
Date	