

FITZ PARK, HOPE PARK & TOWNSFIELD CHARITABLE TRUSTS

**Council Offices
50 Main Street
Keswick
CA12 5JS**

5th March 2020

Dear Sir/Madam

A meeting of the following Charitable Trusts will be held in the Council Chamber, First Floor, Council Offices, 50 Main Street, Keswick, **on Thursday 12th March 2020 at 7.30 pm.**

Members of the press and public are welcome to attend.

Yours faithfully



**Catherine Parker
RFO & Trust Clerk**

HOPE PARK	Registered Charity 503465
FITZ PARK	Registered Charity 520327
TOWN FIELD	Registered Charity 520295

AGENDA

- 1. Apologies**
To receive apologies for absence.
- 2. Declarations of Interests**
To receive any declarations of interests in respect of items on this agenda.
- 3. Minutes**
To authorise the Chairman to sign as a correct record the minutes of the meeting held on 9th January 2020 (pages 9 – 10).
- 4. Parks Manager's Report**
To receive the report of the Parks Manager.
- 5. Climate Change Action Group**
 - i) To receive a report from the action group including recommendation for approval for assistance with Balsam Bashing Days.
 - ii) To receive a proposal from Cllr Lansbury on behalf of the group for a Community Tree Planting event.
- 6. Trust Clerk's Report**
To receive the report of the Trust Clerk.
- 7. Budget Comparisons**
To receive for information the 3rd quarter's budget comparisons.
- 8. Keswick Athletics Club – Races 2020**
To receive details of the races organised by Keswick Athletics Club based in Fitz Park - for information.

9. Request for use of the Parks

To consider the following requests for the use of the parks -

- i) Boot Camp/Circuit Classes – every other week in Fitz Park.
- ii) Dramatised Audio Walks – to trial in summer once or twice per day using Hope Park as part of the route.
- iii) Keswick Town Council – use of Fitz Park for Midsummer Festival events:
 - Prom in the Park on Saturday 27th June 2020
 - Scruffs Dog Show on Sunday 28th June 2020
 - VJ Day on Friday 14th August 2020

Prior to the following business the Chairman will move the following resolution:

‘That under the Public Bodies (Admission to Meetings) Act 1960, the public and representatives of the press and broadcast media be excluded from the meeting during the consideration of the following items of business as publicity would be prejudicial to the public interest because of the confidential nature of the business to be transacted.’

10. Lease – Keswick Football Club

To authorise the Chair to sign the Deed of Variation of Lease with Keswick Football Club.

11. Lease – Fitz Park Sports Clubs

To receive an update from the RFO & Trust Clerk.

12. Contracting

To receive an update from the Parks Manager.

13. Contracting

To receive a report from the RFO & Trust Clerk.

14. Legal

To receive an update from the RFO & Trust Clerk and Town Clerk.

To:
All Councillors/Trustees
Press

FITZ PARK, HOPE PARK & TOWNSFIELD CHARITABLE TRUSTS

Minutes of the meeting of Fitz Park, Hope Park & Townsfield Charitable Trusts held in the Council Chamber, Council Offices, Keswick, on Thursday 9th January 2020 at 7.30pm.

Present:

Chairman
Councillor Adam Paxon

Councillors

Alexandra Boardman
Allan Daniels
Sally Lansbury

David Burn
Alan Dunn
Paul Titley

Markus Campbell-Savours
Steve Harwood

Also in attendance were Lynda Walker (Trust Clerk), Christine Fawcett (Parks Manager), Keith Richardson (Keswick Cricket Club) and one member of the public.

46. Apologies

Apologies for absence were received from Councillors Lywood and Miller.

47. Declarations of Interests

Declarations of interest were received from:

Councillor Harwood – item 9 – Committee member - Keswick Athletics Club

Councillor Lansbury – item 9 – Committee member - Keswick Tennis Club

48. Minutes

RESOLVED that the Chairman be authorised to sign as a correct record the minutes of the meeting held on 14th November 2019 (page 7 - 8).

49. Chairman's Report

RECEIVED the report of the Chairman. Matters of note were covered as agenda items.

50. Clerk's Report

Consideration was given to the Clerk's report. The Parks Manager reported that the re-surfacing work recently carried out at Fitz Park could be funded from within the existing budget so no supplement was required.

RESOLVED that any volunteers wishing to work in the parks be referred to Keswick in Bloom.

51. Parks Manager's Report

Consideration was given to the report of the Parks Manager who also reported that one of the mowers used at Fitz Park needed urgent unplanned repair work.

RESOLVED that the cost of the mower repairs be funded from the contingency amount in the current year's budget.

52. BMX/Pump Track

Consideration was given to the report of the Parks Manager.

RESOLVED that three estimates be obtained for the tarmac surfacing work for consideration at the next meeting, and that a suggestion be put forward to the User Group to seek crowdfunding to cover the cost of the work.

53. Climate Change Emergency

Consideration was given to the report of Councillors Boardman and Lansbury proposing that the Keswick Parks Trusts should adopt the 'Climate Change Emergency Action for Keswick Parks' document.

RESOLVED that Keswick Parks Trusts declare a Climate Change Emergency and that any future decisions should take into consideration the impact of Climate Change.

Prior to the following business the Chairman moved the resolution:

'That under the Public Bodies (Admission to Meetings) Act 1960, the public and representatives of the press and broadcast media be excluded from the meeting during the consideration of the following items of business as publicity would be prejudicial to the public interest because of the confidential nature of the business to be transacted.'

54. Legal - Leases

Consideration was given to the Clerk's report.

RESOLVED that the draft Heads of Terms for the new leases contain a proposal for a nominal contribution towards the park cost deficit.

55. Contracting – Junior Football Pitches

Consideration was given to the Clerk's report.

RESOLVED that the request be declined but that support in kind be offered by the parks staff and a grant application be recommended to the Town Council.

56. Legal – Hospital Field

Consideration was given to the Clerk's report.

RESOLVED

- i) That the land be registered at the Land Registry
- ii) That additional valuations be obtained
- iii) That the Working Group continue negotiations and report back to the next meeting.

The meeting closed at 9.30 p.m.

Chairman

Date

Parks Manager Report March 2020

Christine Fawcett

Wet and windy conditions over this last period have meant progress in all the Parks has been made interesting. Thanks must go to the parks staff for their hard work and the fantastic efforts of the three ladies within the office of Keswick town council.

Hope Park

All of the herbaceous borders have now been covered with bark mulch and are starting to show signs of spring growth with bulbs pushing through the surface.

Winter bedding is flowering well with the polyanthus doing the best.



The tulip bulbs are also through the surface and will be flowering in April/May.

The woodland footpath has had another stretch widened and is proving to be a popular walking route and many good comments have been received on the improvements to the footpath.

One hole on the crazy golf course has been refurbished and includes new kerbs, deeper hole and new concrete surface. The surface will be painted once the weather warms up and a new obstacle installed. Several other holes are to have improvements made when drier conditions allow.

The heavy rain we received on the 09/02/20 left the fairway and woodland under water for three days and plenty of debris to clear up.





A bird bath has been constructed in the bird hide using an old upside-down dustbin surrounded by stone work.

On wet days we have been constructing bird boxes and these have been put up within all the parks. They vary in design to accommodate various small birds including blue tit, great tit, nuthatch, tree sparrow, coal tit and robin



25mm hole for a blue tit, an open slot for a robin and facing north east.

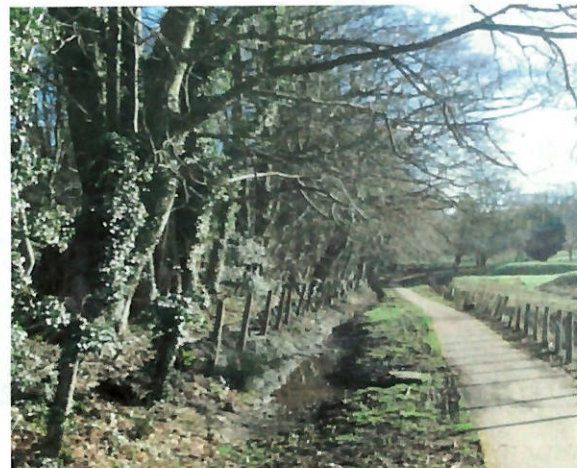
Lower Fitz Park

The playground surface has had its annual top up of three wagon loads of hard wood bark chippings. One of the picnic benches has been relocated to a dryer area and paving flags have been installed for the bench to stand on, creating a cleaner more appealing location.



The water course behind the BMX track has been cleaned out to allow water to move freely through the park and all of the vegetation/debris has been levelled on the side of the fence line.

The tree survey is been carried out by Capita and we are now awaiting approval from the Lake District National Park for permission to remove one *Aesculus hippocastanum*, "T946 has decay in the main stem with reactionary growth in the form of 'ribbing' being present. There are a number of lesions on the main stem which could be caused by a fungal infection. Root decay is present, and the 'bootlaces' of honey fungus were visible in areas where the bark is peeling away from the trunk. The tree has a number of tight



unions which are at an elevated risk of failure. It is recommended that this tree is removed. This tree is located within the Conservation Area.”

Permission is also being applied for to dead wood and remove hung up branches on a group of trees also within the conservation area. Quotes for these tree works will be sourced and the work carried out when everything is in place to proceed.

A new wooden gate has been installed at Crosthwaite road car park at the pedestrian entrance and the shrub bed has been dug over and planted with *Cornus alba* “Eligantissima” and survived being under 3 feet of water.



The flood water receded within 24 hours in the park.

Upper Fitz Park



A paved area has been created to locate a bench on and in the near future build a bug hotel within the area. Railings have also been installed around the compost bays. This area will be improved by adding top soil and composed finings and another wildflower bed created this summer.



The park was lucky enough not to have too much damage after the rainfall on the 09/02/20. The footpaths were covered in water along with the bowling green. Debris has now been cleaned up and at the point of writing no tree damage within Fitz Park with the high winds.



The water reached the Games hut door but not into the building. On first inspection no real structural damage has been found, however until the water levels drop more damage may be apparent.

Further to an email received on the 19th February and a visit from Environment Agency in relation to the imminent weather warning, a decision was been made to close Crosthwaite Road Car Park from Thursday until Monday. This was to prevent vehicles entering ahead of any possible flooding given the third week of heavy rain we have received.



Water Bowser

The water bowser pump has all but given up despite having new seals fitted. The bowser was purchased over 20 years ago and is used to water greens on the pitch and putt, flower beds and transport water within the parks for pressure washing of benches and surfaces.

A replacement SCH 1200L road legal bowser is £4138.00
Less trade in of Used Charterhouse Verti Seed 804 Tractor Mounted Unit £1248.00

Could this replacement be funded from the development and equipment fund?

Two further estimates are detailed below for information:-

Estimate for 1100L poly plant water bowser from tanks direct £4660.00

Estimate for 1125L highways flower watering bowser from direct water tanks £4125.70

Please note: This bowser is delivered on a curtain sided vehicle and it is the customer's responsibility to safely unload the bowser from the delivery vehicle using a forklift truck or similar piece of equipment – Keswick Parks do not have any such equipment.

Bee Hives in the parks

It's no secret that bee populations are in decline across the UK and Europe. There has also been a fantastic increase in public awareness over the past few years, leading many to set up hives in their gardens and on their roofs. But this might not be as helpful as you may think.

The UK is home to around 270 bee species. Most people are familiar with the charismatic bumblebees, but the 250 species of solitary bee remain lesser-known. As the name suggests, they don't live in hives or colonies, but nest alone in cavities or underground.

Bee species also differ in their foraging preferences, selecting flowers based on their shape, colour and scent. This reflects the co-evolution between plants and pollinators and means that plants with certain floral traits depend on compatible bee species. Those with deep flowers depend on bees with tongues long enough to reach the nectar, for example. So losing the variety of the country's wild bee community could leave many cultivated and wild plants without effective pollinators.

What's wrong with keeping honeybees?

The European honeybee (*Apis mellifera*) is a social bee species that has been domesticated for crop pollination and honey production. Beekeeping is often promoted as a way to conserve pollinators and, as a result, is on the rise across the UK. It's great to see people backing the pollinator movement, but managing hives does nothing to protect our wild pollinators. It's the equivalent of farming chickens to save wild birds.

High numbers of honeybees can actively harm wild bee populations, because they compete directly for nectar and pollen. That's not a problem when flowers are plentiful, but in environments where resources are limited, wild bees can be outcompeted. A lack of flowers is one of the main factors behind the decline in bee populations. Initiatives such as urban beekeeping put more pressure on wild bees and worsen the decline.

Honeybees are extremely efficient at collecting pollen and returning it to their hives, but as a consequence they transfer little to the flowers they visit. They are quantifiably less effective at pollination than wild bees, so changes in foraging patterns also have knock-on consequences for the plant community. When honeybees occur in high numbers, they can push wild bees out of an area, making it harder for wild plants to reproduce. Honeybees are not a substitute for wild pollinators, so we must protect the entire bee community to achieve good quality pollination.

Honeybee hives are regularly traded locally and internationally, allowing the rapid spread of diseases and parasites, such as deformed wing virus and Varroa mite. These pathogens can spill over from managed hives into wild bumblebee populations and spread between wild bee species when they visit the same flower. Responsible beekeepers should take steps to control pathogen levels within their hives to minimise transmission to wild bees.

Ref: <http://theconversation.com/keeping-honeybees-doesnt-save-bees-or-the-environment-102931>

Ground nesting or miner bees are solitary bees that create underground galleries, with queens living individually and raising their own young. The entrances to the nests are small piles or patches of bare soil. They do not form hives, but several females may nest in the same area. Ground bee queens do not defend their nesting areas and are very docile and unlikely to



sting, posing little or no threat to people. The males often patrol an area inhabited by females seeking mates. While the males can be very active and seem aggressive, they lack a sting and are also harmless. Like other bees, they are active foragers of nectar and pollen from flowers, making them beneficial pollinators.

Their nest entrances are small mounds of soil a few inches across. While they may briefly detract from the aesthetics of a well-tended lawn, they do absolutely no harm to the grass or soil—even improving it as their nests function as aeration holes, improving the penetration of water and nutrients. Eventually, as the nests are abandoned after the spring nesting season, the soil washes back into place with rain, disappearing completely.

Ref: <https://newgarden.com/notes/ground-nesting-bees>

For the trustee's information we have a large number of mining bees in Upper Fitz Park, mostly located around the grassed areas beside both Tennis courts.

Bringing in Bee Hives into the parks maybe detrimental to the mining bees the park already supports after reading the above research.

Adding another wild flower meadow and a bug hotel will help to preserve the habit they already have. Keeping or increasing the same level and species of planting across all parks and maintaining it can only be beneficial to the wild bee population.

Tree planting in Archery field

This maybe an open space within Lower Fitz Park, but please be mindful a large amount of silt was levelled on this area after storm Desmond in 2015. Trees will take long time to establish themselves if they do grow given the soil conditions and you may have a high failure rate. I am more concerned about where you are going to put the silt if the park floods again and Archery field has been planted.

Climate Change Actions

- Peat free compost has been purchased to grow this year's bedding plants in.
- The glasshouse has been insulated and several more panes of glass replaced after storm Ciara
- Glyphosate free weed killer is now in use within the parks called "New way weed spray" and contains 240g/L Acetic Acid - naturally occurring and bio-degradable.
- Over 250 perennial plants/shrubs have been planted within the parks in 2019
- Over 2500 bulbs have been planted for naturalizing within the parks in 2019

Report from the Climate Change Working Group for the Charitable Trust Meeting of 12 March 2020

Members: Cllrs Alexandra Boardman, Allan Daniels, Sally Lansbury and Paul Titley.

Report by Cllr Lansbury.

Below is a brief summary of current projects and issues being addressed by the Climate Change Group and Parks team, some of these have already been mentioned via the report to the Town Council so these notes are brief but do ask if you want further information.

Plastic Free Code of Conduct: Many of the Sports Clubs that use the Park are going Plastic Free at their events. The principles of reducing single use disposable plastics should continue to be encouraged across all Fitz Park user groups and concession holders on an ongoing basis. This work ties in with **National Refill Scheme / National Refill Day on 19th June and the Keswick Eco Cups** which will both contribute to waste reduction in the Parks.

Recycling: We have agreed to trial a recycling bin, positioned alongside a general waste bin over a busy weekend in Spring to see how the public behave and if they will effectively use a co-mingled recycling bin. We hope that this will help us to plan future waste management proposals.

Glyphosphates: The Park Manager has now purchased an organic alternative weedkiller.

Peat Free compost: there is a tiny amount remaining which will be used in the potting shed and then alternative potting mixes will be purchased.

Bees: See Christine's report – the group agreed with the Park Manager that it is more effective to encourage bees by increasing the number of pollenators in the Parks that will attract wild bee populations, rather than introduce bee-hives. There is a 'Keep Cumbria Buzzing' campaign to investigate which may provide some useful resources <https://www.cumbriawildlifetrust.org.uk/about/what-we-do/living-landscapes/wildlife-conservation-projects/pollinators>

Keswick Community Energy Scheme: We need to keep this on our radar in case there are opportunities we could use rooftops for energy generation and income for the community.

Signs: An idea re promoting the actions Keswick Parks is taking in relation to addressing Climate Change and influencing behaviours about waste was discussed. At this point, we decided to put the information on our website but not proceed with any signs. We can revisit the idea in the future.

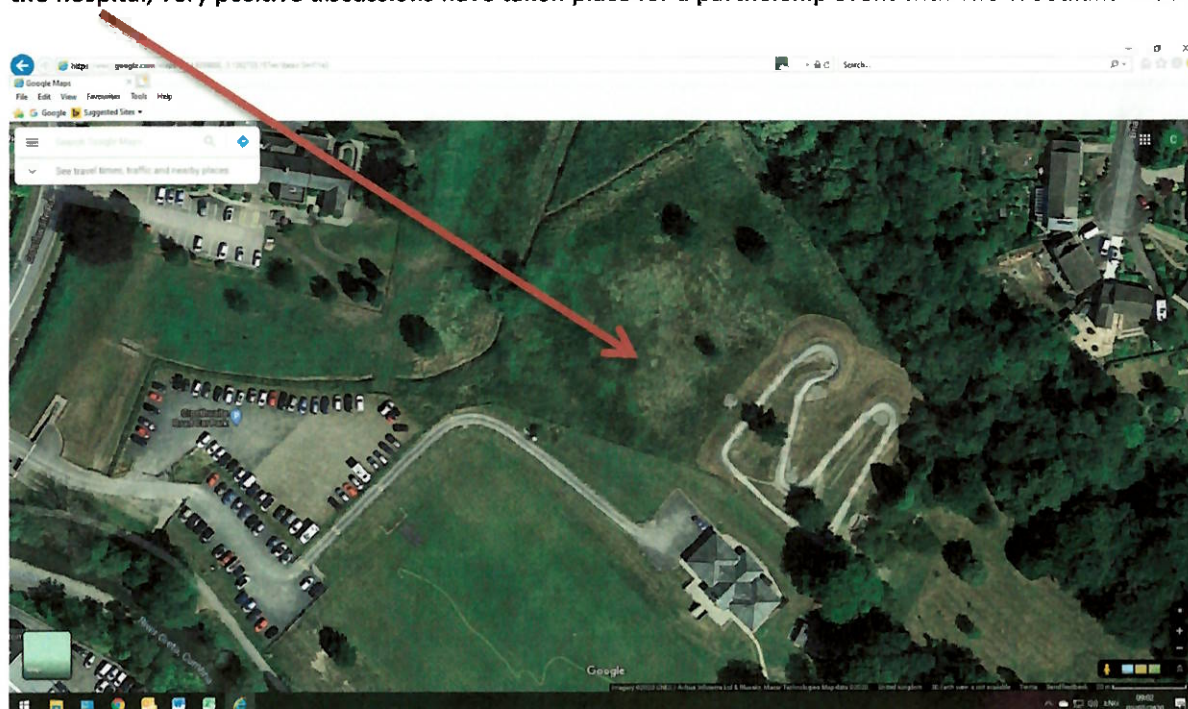
Balsam Bashing: In response to Martin Jordan's report last summer, West Cumbria Rivers Trust and Sustainable Keswick is co-ordinating a series of Balsam Bashing days: Different locations to be confirmed. Saturday 20th June 10am, Tuesday 14th July 5pm and Tuesday 4th August 10am. Each session will last a couple of hours and is intended to be a community event. Could the Trust help to publicise this and would it be possible for Park staff to assist with some strimming equipment and resource in certain areas? Controlling the Balsam can only have a positive effect on the biodiversity of Keswick and the Parks.

Recommendation: That Keswick Parks support the control of invasive species in Keswick by providing assistance and resource to the 'Balsam Bashing' days arranged by Sustainable Keswick and the West Cumbria Rivers Trust. Suggested level of support - one member of trained staff and a strimmer for two hours and an event advert in the Reminder (about £35).

Climate Change Working Group

Proposal from Cllr Lansbury on behalf of the group for a Community Tree Planting Event.

Following discussions about tree planting in Fitz Park, in particular in the area between the BMX track and the hospital, very positive discussions have taken place for a partnership event with The Woodland Trust.



A proposal has been made as follows:

That a community tree planting day is arranged for 25th November, with a 'rain check' fall back date of 2nd December.

The Woodland Trust will provide around 250 saplings free of charge – mainly Willow, Alder and Aspen which they consider most suitable for this site.

These trees are around 18 months old and are 40 – 60 cm in size. (Protective tubes are not recommended for all the trees planted in this location but we can choose to protect a number of them, if we wish).

A Woodland Trust Ranger will attend and give advice to volunteers and Park Staff.

Volunteers will need to bring their own spades and or trowels.

There is no charge for the trees although donations are welcome.

Fitz Parks Trust could provide additional tree varieties for diversity and plant these at the same time or add additional trees at a later date.

Recommendation:

That Fitz Park Trust supports this community event working in partnership with the Woodland Trust to enable the planting of around 250 trees (which will sequester almost 100 Tons of CO₂e over their lifetime) by providing the land, human resources from the Park staff and potentially some spades and trowels. That we publicise the event in the Reminder and that we now write to the Woodland Trust accepting this proposal.

**KESWICK PARKS CHARITABLE TRUSTS MEETING
12th March 2020**

RFO & Trust Clerk Report

Meetings

In the initial stages of my new role as Trust Clerk I have held meetings with Hope Leisure and the Climate Change Working Group.

We are due to hold a Fitz Park Stakeholder meeting soon and will be looking for an appropriate date for this to take place.

Motor Control Centre Kiosk with integrated Bus Shelter - Wivell Park

Construction of the new motor control centre kiosk with integrated bus shelter is going well and is an attractive addition to the area, replacing the old bus shelter.

This work is being undertaken as part of the flood alleviation work and Cumbria County Council will have full responsibility of the building once complete.

Sensory Garden, Wivell Park – Dog Fouling

I have noticed that dog fouling on the shrub beds at the Sensory Garden has increased recently. This area was transformed in 2016 following a very generous donation from the Holroyd Trust and is maintained by the hard working volunteer group Friends of the Parks.

If anyone witnesses careless dog owners not 'picking up' after their dog, in any area within the Town, this can be reported to an Allerdale Borough Council Street Scene Officer either by telephoning 0303 123 1702 or emailing street.scene@allerdale.gov.uk . It is always useful to give the officer a description of the perpetrator, location and date and approx. time.

Officers are able to make visits to the Town to observe problem areas and can issue fines if they witness an offence taking place.

**Catherine Parker
RFO & Trust Clerk**

HOPE PARK

Budget 1st April 2019 to 31st March 2020

Budget Summary as at 31 December 2019

3rd Quarter

Expenditure:	AGREED Budget for 19/20	Expenditure to 31.12.19	% of budget spent
Golf Cups & tee Mats	500	413	82.60
Tools	1250	735	58.80
Materials	1500	395	26.33
Maintenance	1000	266	26.60
Repairs - Paths/fences	4000	4000	100.00
Repairs - Buildings	1200	1200	100.00
Repairs - Course	1500	1029	68.60
Repairs - Machinery	1500	236	15.73
Repairs - Van service/repairs	750	403	53.73
Fuel and licences	3000	1468	48.93
Plants & Compost	3900	3420	87.69
Trees and shrubs	400	321	80.25
Fertilisers	650	465	71.54
Electricity and heating oil	1500	448	29.87
Water rates	300	281	93.67
Wages (Gardeners)	41167	31228	75.86
Wages (Management)	20670	15493	74.95
Wages (Trainee Gardener)	6382	0	0.00
Admin and on costs	24961	16465	65.96
Insurance	3600	4182	116.17
Telephone	500	162	32.40
Advertising - Including Staff Recruitment	600	259	43.17
Trade Refuse Collection	850	493	58.00
Training costs	785	98	12.48
Workwear	1100	914	83.09
Equipment	400	0	0.00
Audit Fee & Accounts Preparation	800	0	0.00
Bird/squirrel feeding station	500	157	31.40
Contingency	1500	0	0.00
Health and Safety	800	529	66.13
Computer equipment	300	211	70.33
Web & Internet Costs	1000	570	57.00
Tree Work & Surveys	2500	202	8.08
Professional Fees	1500	0	0.00
Signs Expense	500	333	66.60
Drainage (filling) work to fairway	1000	0	0.00
Hire Purchase agreements - Tractor only 50% 19/20	1600	1152	72.00
Parks Van - Hire Purchase	4100	3047	74.32
TOTAL EXPENDITURE:	140065	90575	64.67

Income:	AGREED Budget 19/20	Actual Income to 31.12.19	% of budget Income
Games, Golf Hut & Café - Lease/Licence	169086	169086	100.00
Bank interest	5	0	0.00
Donations & Money Spinner	300	387	129.00
Bird/Squirrel Feed Station Donations	250	248	99.20
Hire of Park	550	652	118.55
Recharge to Fitz Park - RTV 100% & Tractor 50%	0	1666	0.00
Sale of Scrap	0	57	0.00
TOTAL INCOME:	170191	172096	101.12

SURPLUS/deficit	30126	81521
------------------------	--------------	--------------

FITZ PARK

1st April 2019 - 31st March 2020

Budget Summary as at 31 December 2019

3rd Quarter

Expenditure:	AGREED Budget for 19/20	Expenditure to 31.12.19	% of budget spent
Materials	2000	1415	70.75
Games Equipment - Including CSA	200	200	100.00
Repairs - Paths, fences & walls	3000	3000	100.00
Repairs - Buildings	1000	368	36.80
Repairs - Greens and courts	2000	1972	98.60
Repairs & Maintenance - children's play area	6000	4017	66.95
Repairs - Bridges (Wivell & Knights)	250	0	0.00
Trade refuse	1500	747	49.80
Plants, trees & shrubs	500	497	99.40
Fertiliser	1000	1004	100.40
Electricity	850	982	115.53
CSA Electricity	500	84	16.80
CSA Expenditure	1500	834	55.60
Water Rates	550	134	24.36
Wages (Management)	20670	15493	74.95
Wages, NI & SA (Gardener & Maintenance)	53727	42106	78.37
Wages (Trainee Gardener)	6382	0	0.00
Grass cutting - outside contract	5600	4958	88.54
Admin and on costs	24961	16465	65.96
Insurance	6000	5732	95.53
Advertising & Staff Recruitment	600	516	86.00
Car park expenses	7000	9000	128.57
Audit fee & Accounts Preparation	800	0	0.00
Tools	800	633	79.13
Health and Safety	300	303	101.00
Sinking Fund	15000	15000	100.00
Hygiene Contract	90	79	87.78
Signs Expense	300	242	80.67
Tree Work	3500	873	24.94
Workwear	600	600	100.00
Contingency	1500	0	0.00
Maintenance	1500	688	45.87
BMX Track Expenditure	1000	0	0.00
Bank Charges from July 2016	350	509	145.43
Training	500	160	32.00
Fuel	500	698	139.60
Repairs - Machinery	850	709	83.41
Hire purchase - RTV 100% & Tractor 50%	3400	1666	49.00
Total Expenditure:	176780	131684	74.49

Income:	AGREED Budget for 19/20	Income to 31.12.19	% of budget income
Licence Fee - Games & Catering	0	0	0.00
New Car park income	25000	26775	107.10
Wayleaves	33	33	100.00
Insurance Reimbursements	1300	1329	102.23
Hire of Fitz Park	2000	1779	88.95
Donations	50	366	732.00
Tennis Club - Licence Agreement	1250	1250	100.00
Football Club - Lease	1000	1000	100.00
Car Park Levy - Football Club	5000	9891	197.82
CSA Electricity	150	0	0.00
Play Area Donations	150	540	360.00
Bank Interest & Loyalty Reward from July 2016	100	103	103.00
Gift Aid	0	0	0.00
Grant from Keswick Town Council*	120747	120747	100.00
Grant from Allerdale Borough Council*	20000	20000	100.00
<i>*(to cover deficit of £140,747)</i>			
Total Income:	176780	183813	103.98

NET SURPLUS/DEFICIT	0	52129
----------------------------	----------	--------------

Keswick Athletics Club Races - 2020

As in previous years I confirm the following details of races organised by Keswick Athletic Club which are based in Fitz Park.

1. Wed. 22 April 2020 - Keswick Round the Houses Race starting at 7.00pm using the Cricket Pavilion as its base for registration etc.
2. Wed. 13 May 2020 - Annual Latrigg Race starting at 7.00pm using the Cricket Pavilion as its base.
3. Sun. 5 July 2020 - Annual Skiddaw Race starting at 12.30pm using the Football Club Pavilion as its base.
4. Wed. 12 Aug. 2020- Annual Round Latrigg Race starting at 7.00pm using the Cricket Pavilion as its base.
5. Cumbria league Cross Country Races in November/December - date to be confirmed.

All the above races are run under licences from UK Athletics for Road and Cross Country events and from the Fell Runners Association for Fell Races which provides full insurance cover.

Boot Camp/Circuit Classes – Request for use of Fitz Park

I'm just starting my own outdoors and exercise business and was wondering if there are any restrictions on using Fitz Park (lower) for boot camps/circuit classes? Do I need a permit or anything like that?

The classes I'm thinking would be regular and the park is a great, safe venue so I'd anticipate at least every other week. And yes, I'm aiming for year round unless the weather is especially bad.

I'm conscious of the environmental impact of lots of folk charging about in the park so would use the hard surfaces or find elsewhere if the ground was particularly boggy. I'd also try to move it about so one area isn't getting ruined (unless that is the preference of course).

I guess I'd be thinking up to 20 people but again I'd be happy to work with you on best practice.

Dramatised Audio Walks – Request for use of Hope Park

I am a theatre director (having worked at Theatre by the Lake for many years) and I live locally. I develop and produce new work and I also work in radio. I am exploring the viability of creating dramatised audio walks where members of the public travel on foot along a planned route while listening to drama content on headphones that we would provide. The content itself is still being developed but the integration of what the audience see and experience on the route is what makes this creatively exciting.

I would like permission to bring groups through Hope Park on these audio walks. I am also in discussion with Cumbria Highways about their conditions and permission. The route I am proposing would be from the centre of Keswick outside the Moot Hall down Lake Road and then through Hope Park and then concluding either in Crow Park or on the Foreshore.

Audience numbers would be between 10 and 20 and they would be escorted by a guide. Demand for such a new venture is a little hard to judge but I'm hoping it will prove to be attractive for both locals and visitors to the town. It has very little impact as it is, in effect, silent and on foot. I would hope that the event would increase awareness and appreciation of Hope Park itself.

I am proposing to trial these events this summer and programme them either once or twice a day depending on demand. At this stage I estimate the walks would take approximately one hour. I would of course arrange the necessary public liability insurance.

I will need to charge although I have not been able to finalise my budget yet - part of my reason for contacting you and others was to find out if there were any costs I had not anticipated. I imagine I will need to charge somewhere between £5 and £10.

Do let me know if you need any further information.