

FITZ PARK, HOPE PARK & TOWNSFIELD CHARITABLE TRUSTS

Council Offices
50 Main Street
Keswick
CA12 5JS
Tel 017687 73607

4th July 2019

The annual meeting of the Charitable Trusts listed below will be held in the Council Chamber, First Floor, Council Offices, 50 Main Street, Keswick, on **Thursday 11th July 2019 at 7.30 pm.**

The press and public are welcome to attend.



Lynda Walker
Town Clerk

HOPE PARK Registered Charity 503465
FITZ PARK Registered Charity 520327
TOWNSFIELD Registered Charity 520295

A G E N D A

- 1. Apologies**
To receive apologies for absence.
- 2. Election of Chairman**
To elect a Chairman for the ensuing year.
- 3. Election of Vice Chairman**
To elect a Vice Chairman for the ensuing year.
- 4. Minutes**
To approve and authorise the Chairman to sign the Minutes of the meeting held on 14th March 2019 (pages 13-14).
- 5. Declarations of Interests**
To receive any declarations of interests in respect of items on this agenda.
- 6. Bus Shelter at Wivell Park**
James Daplyn of Cumbria County Council will present the proposed designs for the new bus shelter and housing for the control equipment on Penrith Road to be provided as part of the Penrith Road Flood Alleviation scheme.
- 7. Chairman's Report**
To receive the Chairman's Report.
- 8. Parks Manager's Report**
To receive the reports of the Parks Manager for May and July 2019.
- 9. Clerk's Report**
To consider the report of the Clerk.

10. Budget Comparisons

To receive budget comparisons for the fourth quarter.

11. Assets Register

To approve and adopt the updated Assets Registers for Hope and Fitz Parks.

12. Review of Hire Charges

To review charges for hire of the parks.

13. Renewal of leases at Fitz Park

To agree arrangements for negotiating the renewal of leases with the sports clubs at Fitz Park (current leases expire in September 2020).

14. Requests for use of the Parks

- i) Lakesman Triathlon – use of Crosthwaite Road car park from 19th – 22nd June and hire of Hope Park on 21st June 2020.

FITZ PARK, HOPE PARK & TOWNSFIELD CHARITABLE TRUSTS

Minutes of the meeting of Fitz Park, Hope Park & Townsfield Charitable Trusts held in the Council Chamber, First Floor, Council Offices, Keswick, on Thursday 14th March 2019 at 7.30pm.

Present:

Chairman
Councillor Adam Paxon

Councillors		
Allan Daniels	Martin Jordan	Denstone Kemp
Graham Kendall	Susan Leighton	Duncan Miller
Jean Murray	Paul Titley	

Also in attendance were Lynda Walker (Trust Clerk) and Christine Fawcett (Parks Manager).

73. Apologies

Apologies for absence were received from Councillors Burn, Lywood and Pugmire.

74. Declarations of Interests

No declarations of interest were received.

75. Minutes

RESOLVED that the Chairman be authorised to sign as a correct record the minutes of the meeting held on 10th January 2019 (pages 11 – 12).

76. Chairman's Report

The Chair reported on a recent meeting with Keswick Cricket and Rotary Clubs, also attended by the Vice Chair, regarding the proposal to hold a Wine and Food Festival in Fitz Park at the end of August. The event was still very much in the planning stages and further information would become available in due course.

77. Tree stump at Upper Fitz Park

Consideration was given to options for carving or removal of the remains of the conifer at Upper Fitz Park. The Parks Manager circulated photographs of sample designs.

RESOLVED that three further less intricate, more robust, designs be submitted to the next meeting together with costings.

78. Parks Manager's Report

Consideration was given to the report of the Parks Manager who also presented firm costings for the WW1 memorial seat and plinth for Lower Fitz Park.

RESOLVED that the seat and plinth be provided at a total cost of £4,411 to be funded from remaining contingency and underspends in the 2018/19 budget.

79. Amenity Benches at Hope and Fitz Parks

Consideration was given to a request for provision of amenity benches in Hope and Fitz Parks.

RESOLVED that benches be provided in Fitz Park on the riverside path near the car park and in Hope Park close to Crow Park Road (exact positions to be determined by the Parks Manager) to be funded from the donation offered.

80. Clerk's Report

Consideration was given to the report of the Clerk.

RESOLVED that the request from Atkinsons Builders Ltd to install a pipe across land at Upper Fitz Park to assist with surface water drainage on Brundholme Road be approved, should it be required, subject to full reinstatement of the ground/path.

Note – item on renewal of leases at Fitz Park to be included on agenda for July meeting.

81. Budget Comparisons

RECEIVED for information the 3rd quarter's budget comparisons.

82. Requests for use of the Parks

RESOLVED that the following requests for use of the parks be approved:

- i) Keswick Rotary and Cricket Clubs – use of Fitz Park for Wine and Food Event – approved in principle subject to further information on the duration of the event.
- ii) Keswick Town Council – use of Lower Fitz Park and closure of the Community Sports Area for Midsummer Festival events viz:
 - Prom in the Park on Saturday 29th June 2019
 - Scruffs Dog Show on Sunday 30th June 2019
- iii) Keswick Mountain Festival – contingency arrangements for use of Hope Park as an alternative finish route.

Prior to the following business the Chairman moved the resolution:

'That under the Public Bodies (Admission to Meetings) Act 1960, the public and representatives of the press and broadcast media be excluded from the meeting during the consideration of the following items of business as publicity would be prejudicial to the public interest because of the confidential nature of the business to be transacted.'

83. Lease – Keswick Football Club

RESOLVED that the Chair be authorised to sign the Deed of Variation of Lease with Keswick Football Club.

84. Fitz Park Games 2019

The Clerk reported that Hope Leisure Ltd had agreed to operate the games at Fitz Park for 2019 on the same terms as 2018.

The meeting closed at 8.45 pm

Chairman

Date



Parks Manager's Report May 2019

Christine Fawcett

Spring is now on it way; grass is being cut and deciduous trees and shrubs are bursting into leaf and flower. Thanks goes to all the staff for their continued hard work within the parks and office.

Hope Park

The obstacle golf course has been repainted and repairs have been carried out as requested around the high wear areas of the holes. A fast-drying grip fast compound was used for this process due to the high volume of people using the course.

The greens have all been fertilized and starting to grow. With the dry and cooler conditions in April they took a longer than average time to respond and watering was being carried out to support them. Given the high volume of people using the course over the Easter holidays the greens are standing up well and will be fertilized again in early May. They have also been sprayed for turf weeds and treated for worm casts.

Three more memorial benches have been sold and installed within the park and thanks must go to ladies within the office for all their work in this process.



The bedding plants have arrived and are all housed in the greenhouse, being grown on until ready to plant out in early/mid- June. Parks staff are

on a rota for weekend watering as the days become longer, plants will not last the weekend without water.

The Fairtrade border was looking very tired and full of



perennial weeds.

This planting has been sprayed off and



removed. As a temporary measure and part of the

perennial weed clean-up operation, an annual wild flower seed mix has been sown. This seed mix will give colour and a habitat for wildlife for this summer before being removed in winter. If we have managed to eliminate the perennial weeds we will replant the border next spring as before to represent the Fairtrade badge.

The *Davidia involucrate* or Handkerchief tree in Lady Hope's Garden has flowered for the first time in its seven year life and has been a lovely sight to see.



Townsville

The grass has been cut and looks good for the time of year. The annual Ram fair will take place on the 16th May and will receive an additional trim from them.

Tree works highlighted in the annual tree report have been carried out and include the removal of a silver birch tree and the removal of overhanging branches around the street lamps, improving light to the footpath. Branches have also been removed along the river side footpath.

Lower Fitz Park

Grass cutting of Lower Fitz has begun and is being carried out on a twice monthly basis.

The play area has been very busy over the Easter Break and replacement parts have been fitted to various pieces of equipment. Including new springs and seats to the Frog springer and new bearings to the Gyrospiral.



A contractor is at the time of writing this report carrying out the dead wooding of the large oak trees behind the Cricket Club and beside the play area. Chipping of the smaller branch material is being carried out by in house staff to keep costs down using our own machine.



The main entrance into the park off Station Road will be completed very shortly by our contractor.

The tree branches down past the footpath to the BMX pump track have been cut back and the open drains will be cleaned out in due course.

The car park has been sprayed for weeds and the new beech hedge is coming into leaf.

Upper Fitz Park

The tennis courts, bowling green and surrounding grassed areas have been aeriated and fertilizer applied. An application of moss killer and herbicide to control turf weeds has been carried out and scarifying to remove the moss will continue throughout the summer. The bowling green, tennis court and putting area are open at weekends for games and have been since Easter, weather permitting.



All shrub beds have been mulched and pruning of the shrub bed next to Wivell bridge has been completed. This has allowed more light into the park and will allow these shrubs to rejuvenate with new growth.



A number of Daffodil and Crocus bulbs were planted last Autumn within the park, the daffodils have flowered however the crocus bulbs have not fared so well. Unfortunately, the rabbits within the grounds have eaten the crocuses as fast as they tried to grow.

Wivell

The grass around the War Memorial is now being cut and strimmed by parks staff once a week, ground conditions have been improved and holes filled in. Weeds have been sprayed around the hard landscaping of the War Memorial and adjoining footpaths.

Parks Manager's Report July 2019

Christine Fawcett

The weather over the last two months has been warm, sunny and wet at times thus providing us with good growing conditions for both bedding plants and grass.

Thanks must go to the parks staff for their hard work and commitment and also to the three ladies within the office for their energy to carry out the tasks in hand.

Hope Park

Bedding plants are all now in the ground or planted up in tubs and containers, the displays vary from begonias to geraniums with millet planted through as dot plants to give height and texture.



The wooden planters at the entrance to the park were past their best and have been removed.

A new raised bed has been made using recycled stone and has been planted up with surplus bedding plants.

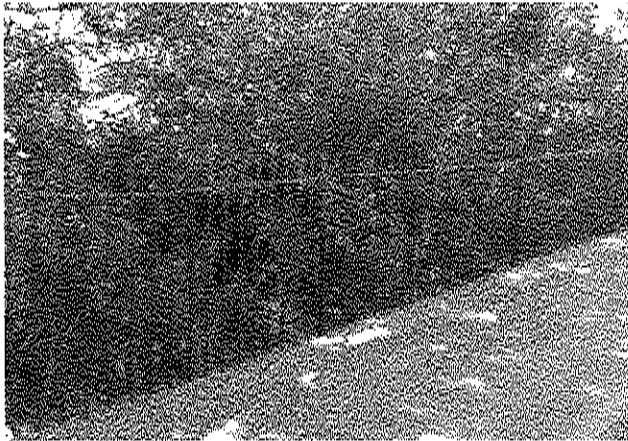
The putting green is showing good growth and beginning to look more like a putting surface. The hard scarifying and aeration last autumn is paying off and the new grass seeds are filling out to create a better surface. An application of liquid iron has been applied and summer fertilizer will be added in early July.

The pitch and putt is looking well and all of the putting greens have been sprayed for fusarium patch. After the dry weather in April/May and warm damper conditions in early June it was ideal for the fungal disease to break out. The 5th and 6th greens have now got a decent playing surface after being reseeded late in the season last year and will improve more as the years go. Another application of summer fertilizer will be applied shortly.



The dying Alder trees in the woodland area will be removed this summer by inhouse staff as highlighted by the recent tree report.

In mid-May we were kindly joined by 15 volunteers from Keswick Ministries. The weather was kind to us and we had a very enjoyable day. Activities included painting railings and gates and planting polyanthus plants in the woodland area. Many thanks to everyone involved and your help was much appreciated.



Railings painted by the volunteers of Keswick Ministries

The potting shed door and surrounding woodwork has been repaired and repainted.



The boiler in the glasshouse has been highlighted to be replaced by our service engineer. The baffle plates have dropped and a new boiler has been recommended. A quote is awaited to replace the boiler. £2650.00 would be available from the current budget, however this would use all of the contingency budget from Hope Park.

Townfield

Grass is now being cut twice per month and the resiting of the dog waste bin has proved worthwhile.

War Memorial

The raised beds have been replanted with begonias and Ageratum for the summer display. A quote is being sourced to replace the coping stones of the raised beds and replace them with the same slate flags as used on the surface around the memorial. If acceptable this work will be carried out in the autumn.



Lower Fitz Park

The slate sign has been reinstated beside the avenue of trees it represents, dating back to 1937.



The footpath past the BMX pump track is now being strimmed on a regular basis and looks much better.



The slate plinth has now been put down around the memorial oak tree and the seat is now in place.





The play area has had more replacement parts fitted including two new wooden posts to the cradle swing. These are simple ongoing repairs due to wood rotting over time and our wet climate.



The main entrance to lower Fitz has now been resurfaced and improved access to all users.



Two finger posts have been ordered to be installed near Knightsbridge and Silverbridge. These are to be funded through the CCF resilient grant we received and are part of the flood strategy report carried out by Rubicon Project Consultancy. A proof of the finger posts will be available at the meeting.

Upper Fitz Park

Games are in operation at weekends and on some occasions through the week too. The Croquet club are making good use of the bowling green and enjoying the surface.

In early June we had an outbreak of fusarium patch on all the grassed areas, however the grass was sprayed with fungicide to help control the turf disease.

Scarifying has been carried out to both the bowling green and the tennis courts to remove thatch and improve drainage and an application of liquid iron has been applied.

One of the Dennis mowers is not as useful as the Dennis FT510 and I seek permission to part exchange the Dennis simplex 610 for another FT510.

The mower I would like to exchange is over 10 years old and can only be used for grass cutting. It does not have the interchangeable cassette system of the Dennis FT510 and cannot be used for scarifying or verti cutting. With another FT510 operations could be carried out more efficiently.

A quote has been received for this part exchange and it would cost £3680.00. However, £77 is available in the remainder of the insurance settlement and a further £603 in the current parks budget. I would request that the additional £3000.00 come from the Development and Equipment Fund to exchange this piece of machinery that is used on a daily basis throughout the growing season.

Proposed Tree Stump Carving

Tree carving examples of birds in flight are shown below, costings will be available at the meeting.



KESWICK PARKS CHARITABLE TRUSTS
11TH JULY 2019

CLERK'S REPORT

Following the cancellation of the May meeting due to lack of Councillors, there is quite a lot to report since the last Trust meeting in March. I would like to welcome new and returning Councillors and hope that they will enjoy their role in the management of Keswick parks. To help with familiarisation and to show all the work which has been carried out in the parks since the Storm Desmond flooding, it is proposed to hold a 'Parks Inspection' on the evening of Tuesday 30th July starting at 5.00pm from Hope Park café. I hope as many as possible will be able to come along and perhaps join the tour at some point if not available for the start at 5.00pm. Further details will follow.

WW1 Commemorative tree and seat

This has now been positioned in lower Fitz Park near to Knightsbridge and has attracted positive comment. In view of the nature of the 'installation' I would like to propose a short 'dedication' take place and Revd Charles Hope has indicated that he would be prepared to say a few words. If this is approved, a date and time will be arranged.

Outlet into River Greta

Following approval at the last Trust meeting to allow an outlet through Fitz Park to help alleviate flooding problems to properties on Brundholme Road and Calvert Way, the Parks Manager has now met the contractors and work is proposed to start mid to end of July assuming a permit is received from the Environment Agency.

Antisocial behaviour continues to be a problem at Upper Fitz Park and some monitoring is taking place by the Police. Any incidents are being reported on the 101 number or email.

LW
040719

HOPE PARK

Budget 1st April 2018 to 31st March 2019

Budget Summary as at 31 March 2019 - PENDING YEAR END ADJUSTMENTS

4th Quarter

Expenditure:	AGREED Budget for 18/19	Expenditure to 31.03.19	% of budget spent
Golf Cups & tee Mats	500	500	100.00
Tools	1250	1191	95.28
Materials	1500	1499	99.93
Maintenance	1000	1004	100.40
Repairs - Paths/fences	3000	0	0.00
Repairs - Buildings	1200	1199	99.92
Repairs - Course	500	1073	214.60
Repairs - Machinery	1500	1460	97.33
Repairs - Van service/repairs	750	271	36.13
Fuel and Licences	3000	2515	83.83
Plants & Compost	3900	3838	98.41
Trees and shrubs	400	323	80.75
Fertilisers	650	853	131.23
Electricity and heating oil	1500	978	65.20
Water rates	300	222	74.00
Wages (Gardeners)	38263	35506	92.79
Wages (Management)	33272	33655	101.15
Admin and on costs	24205	22058	91.13
Insurance	3600	3874	107.61
Telephone	450	398	88.44
Advertising - Including Staff Recruitment	600	0	0.00
Trade Refuse Collection	680	531	78.09
Training costs	785	767	97.71
Workwear	1500	812	54.13
Equipment	400	400	100.00
Audit Fee & Accounts Preparation	800	0	0.00
Bird/squirrel feeding station	500	404	80.80
Printing and stationery	50	3	6.00
Contingency	1500	0	0.00
Health and Safety	800	796	99.50
Computer equipment	300	300	100.00
Web & Internet Costs	800	809	101.13
Tree Work & Surveys	2000	1125	56.25
Professional Fees	1500	0	0.00
Signs Expense	500	236	47.20
Drainage (filling) work to fairway	1000	395	39.50
Hire Purchase agreements - RTV & Mower	5000	4869	97.38
Contribution to D&E Fund	0	0	0.00
TOTAL EXPENDITURE:	139455	123864	88.82

Income:	AGREED Budget 18/19	Actual Income to 31.03.19	% of budget Income
Games, Golf Hut & Café - Lease/Licence	165920	165262	99.60
Bank interest	5	0	0.00
Donations & Money Spinner	300	321	107.00
Building Fund interest	10	0	0.00
Bird/Squirrel Feed Station Donations	250	384	153.60
Keswick Lions	400	220	55.00
Hire of Park	550	550	100.00
Sale of Scrap	0	178	0.00
TOTAL INCOME:	167435	166915	99.69

SURPLUS/deficit	27980	43051
------------------------	--------------	--------------

FITZ PARK

1st April 2018 - 31st March 2019

Budget Summary as at 31 March 2019 - PENDING YEAR END ADJUSTMENTS

4th Quarter

	AGREED Budget for 18/19	Expenditure to 31.03.19	% of budget spent
Expenditure:			
Materials	2000	1961	98.05
Games Equipment - Including CSA	200	200	100.00
Repairs - Paths, fences & walls	3000	605	20.17
Repairs - Buildings	1000	998	99.80
Repairs - Greens and courts	1800	1799	99.94
Repairs & Maintenance - children's play area	6000	4889	81.48
Repairs - Bridges (Wivell & Knights)	250	0	0.00
Trade refuse	750	504	67.20
Plants, trees & shrubs	1000	1000	100.00
Fertiliser	1000	1000	100.00
Electricity	850	870	102.35
CSA Electricity	500	97	19.40
CSA Expenditure	2000	336	16.80
Water Rates	550	312	56.73
Wages (Management)	33272	33655	101.15
Wages, NI & SA (Gardener & Maintenance)	32325	31950	98.84
Admin and on costs	24205	22058	91.13
Insurance	5000	5651	113.02
Advertising & Staff Recruitment	600	0	0.00
Car Park Management & Maintenance	6000	9400	156.67
Audit fee & Accounts Preparation	800	0	0.00
Tools	800	800	100.00
Health and Safety	300	300	100.00
Printing & Stationery	50	0	0.00
Sinking Fund	15000	15000	100.00
Hygiene Contract	75	77	102.67
Signs Expense	300	161	53.67
Tree Work	3500	1400	40.00
Workwear	700	697	99.57
Contingency	2500	445	17.80
Professional Fees	250	0	0.00
Maintenance	1500	1452	96.80
BMX Track Expenditure	1000	214	21.40
Bank Charges from July 2016	300	358	119.33
Collection Box Upgrade - Play Area	1300	594	45.69
Training	800	638	79.75
Fuel	1000	688	68.80
Repairs - Machinery	750	846	112.80
		6000	
Total Expenditure:	153227	146955	95.91

	AGREED Budget for 18/19	Income to 31.03.19	% of budget income
Income:			
Licence Fee - Games & Catering	0	0	0.00
New Car park income	20000	28334	141.67
Wayleaves	33	133	403.03
Insurance Reimbursements	1250	1290	103.20
Hire of Fitz Park	2000	1868	93.40
Donations	100	228	228.00
Tennis Club - Licence Agreement	1250	1250	100.00
Football Club - Lease	1000	1000	100.00
Car Park Levy - Football Club	5000	5810	116.20
CSA Electricity	300	0	0.00
Play Area Donations	150	187	124.67
BMX Track Donations	0	0	0.00
Bank Interest & Loyalty Reward from July 2016	100	108	108.00
Gift Aid	0	755	0.00
Total Income:	31183	40963	131.36

Inc Wivell Park
work

NET EXPENDITURE DEFICIT	-122044	-105992	86.85
--------------------------------	----------------	----------------	--------------

KESWICK TOWN COUNCIL ASSETS REGISTER

FITZ PARK CHARITABLE TRUST

AS AT 31/3/2019

Date Purchased	Purchase Cost	Description	Location	Notes	Previous year's value	Additions	Disposals	Total	Depreciation @ 0%	Current Value
		Original deeds held at Keswick Museum	Fitz Park, Station Road							
		Storage Buildings - 2 x container & 1 x staff unit* * possible flood damage TBC			190285					190285
					190285			190285		190285
Date Purchased	Purchase Cost	Description	Location	Notes	Previous year's value	Additions	Disposals	Total	Depreciation @ 20%	Current Value
Trust Plant & Machinery (Parks & Staff Premises Equipment & Power Tools)										
01.04.09	£81.00	Staff Lockers	Staff Hut		11				2	9
31.03.13	£172.00	Chubb Safe	Games Hut		45				9	86
27.01.15	£500.00	Transbank Fuel Store	Fitz Park	800 x 420 x 520	205				41	164
30.09.15	£157.25	Husvarna 435 15 bar chainsaw (50% Hope/Fitz)	Workshop Hope/Fitz	Ser 2014 1100006	81				16	65
14.09.16	£1,866.00	Dennis Symplex 610 Mower(CF) (split Hope/Fitz)	Workshop Hope/Fitz	S/N G610110	1194				239	955
31.10.16	£389.00	Honda 2.75KVA Generator	Workshop Hope/Fitz	SPE2500 GX160	249				50	199
31.10.16	£289.00	Makita Compact Drill Driver	Workshop Hope/Fitz	DLX2005MJ	172				34	138
31.10.16	£116.91	Milwaukee Orbit Sander 240V	Workshop Hope/Fitz	4933431180	75				15	60
31.10.16	£47.63	Comb Spinner set MM (14)	Workshop Hope/Fitz	8-32mm	30				6	24
31.10.16	£534.50	Belle Minimix 150 Cement Mixer	Workshop Hope/Fitz	866030	342				68	274
25.10.16	£6,000.00	Charterhouse 1700 Verticora (part ex)	Workshop Hope/Fitz	11150755	3840				768	3072
26.11.16	£49.90	Makita Angle Grinder 240V	Workshop Hope/Fitz	GA4530	37				6	26
06.01.17	£565.00	New Howardson Brush Cassette (to fit S10)	Workshop Hope/Fitz	11151163	352				72	280
31.01.17	£1,450.00	Used Charterhouse 804 Vertiseed	Workshop Hope/Fitz	71150210	928				185	742
05.06.18	£204.16	Stihl F556R C-E blower	Workshop Hope/Fitz	F556R C-E	163				33	130
22.05.19	£500.00	Dennis Scarrifier Cassette - Hope charged £970 Total cost	Workshop Hope/Fitz	S/N 21484	0	500			100	400
12.04.19	£125.19	Transbank Fuel Store - Yellow	Fitz Park	5BXTRBC1	0	125			25	100
	£13,027.54				7729	625	0	8354	1671	6683
Trust Plant & Machinery (Park Furniture)										
		Large wheelle bin	Allendale Borough		0				0	0
		Small wheelle bins x 4	Councils Property		0				0	0
		Seats - complete wood			0				0	0
23.05.99		Picnic Tables			0				0	0
31.03.02	£1,289.00	Memorial seats			37				7	30
2009/09	£540.00	Memorial seats			58				12	46
2009/10	£640.00	Memorial seats			86				17	69
26.03.10	£509.00	Standard Wooden Picnic Tables (Play Area)			53				11	42
19.01.17	£753.75	Memorial seats			482				96	386
15.02.17	£360.00	Memorial seats			230				46	184
19.06.18	£1,040.10	Memorial seats (3)			832				165	666
05.09.18	£1,020.00	Memorial seats (3)			816				163	653
03.09.18	£450.00	Memorial seat (1)			0	450			90	360
10.09.18	£400.00	Memorial seat (1)			0	400			80	320
20.09.18	£450.00	Memorial seat (1)			0	450			90	360
	£7,451.85				2594	1300	0	3894	779	3118
			Total Plant & Machinery		9796					
Playground Equipment										
31.12.09	£86,867.00	Various Items			20834				4179	16715
					20834	0	0	20834	4179	16715
Date Purchased	Purchase Cost	Description	Location	Notes	Previous year's value	Additions	Disposals	Total	Depreciation @ 20%	Current Value
Car Park										
31.03.12	£ 99,797.00	New Car Park - Hospital Field	Hospital Field		99797				99797	99797
CSA										
31.03.11	£ 136,213.00	New CSA	Lower Fitz Park		136213				136213	136213
BMX Track										
18.03.14	£ 36,600.00	New BMX Pump Track	Hospital Field		36600				36600	36600
Outdoor Gym										
11.12.18	£ 25,000.00	New Gym Equipment	Lower Fitz Park		0	25000			5000	20000
				TOTAL	494112	1925	0	496037	6628	489409

Memorial Seats - Physical check made March 2017. For insurance purposes - in addition to totals above for furniture

2016/17	Adjustment actual record (LF x 6 seats & UF x 25 @ £400 each)	£12,400.00
2017/18	Additions above x 6	£2,400.00
2017/18	Removals x 2	-£800.00
2018/19	Additions above x 3	£1,300.00
2018/19	Removals x 2	-£800.00
		£14,500.00

Note: cannot be placed on asset register workings as purchased in previous years - Re FHC & CAP 2017

Keswick Parks – Schedule of Charges - 2019

Keswick Parks current schedule of charges are: -

Description of Charge	Charge
Community Sports Area - Fitz Park	£2 per hour
Notes	Tokens available from Keswick YHA Cafe

Description of Charge	Charge
Crosthwaite Road Car Park	£3.50 all day £100 per year – Annual Parking Permit £10 per month – Monthly Parking Permit
Notes	No overnight parking Permits available from KTC office during office opening hours

Description of Charge	Charge
Fitz Park & Hope Park Hire Charges	The base rate for use of the park be set, as a minimum, at £500.00 plus VAT per day (with a charge of £125 plus VAT applying for set up/take down days) OR £1 plus VAT per competitor whichever is greater.
Notes	The base rate will be invoiced prior to the event with the remainder being paid after the event once the number of competitors has been clarified. <i>Please note: The Trust retains the discretion to amend this charge as it sees fit</i> <i>In certain circumstances - In addition to the above a bond payment of either £500.00 or £750.00 will be payable prior to the event and held by the Trust until confirmation has been received from the Parks Manager, after the event, that no damage has been caused.</i>

The above is a review of the current charges in place, if Councillors feel anything should be amended then suggestions are welcome for approval.

Catherine Parker
Responsible Finance Officer – July 2019