

**FITZ PARK, HOPE PARK & TOWNSFIELD CHARITABLE TRUSTS**

**Council Offices  
50 Main Street  
Keswick  
CA12 5JS**

3<sup>rd</sup> January 2019

A meeting of the following Charitable Trusts will be held in the Council Chamber, First Floor, Council Offices, 50 Main Street, Keswick, on **Thursday 10<sup>th</sup> January 2019 at 7.30pm.**

**The press and public are welcome to attend.**



**Lynda Walker  
Town Clerk**

<b>HOPE PARK</b>	<b>Registered Charity</b>	<b>503465</b>
<b>FITZ PARK</b>	<b>Registered Charity</b>	<b>520327</b>
<b>TOWNSFIELD</b>	<b>Registered Charity</b>	<b>520295</b>

**AGENDA**

- 1. Apologies**  
To receive apologies for absence.
- 2. Declarations of Interests**  
To receive any declarations of interests in respect of items on this agenda.
- 3. Minutes**  
To authorise the Chairman to sign as a correct record the minutes of the meeting held on 8<sup>th</sup> November 2018 (page 9 - 10).
- 4. Chairman's Report**  
To receive the Chairman's report.
- 5. Outdoor Gym in Fitz Park**  
To receive an update from Councillor Titley.
- 6. Keswick Cricket Club**  
To receive an update from the Vice Chair following his meeting with Keith Richardson to agree work required to the Cricket Pavilion to be funded by the Trust.
- 7. Clerk's Report**  
To consider the report of the Clerk.
- 8. Parks Manager's Report**  
To consider the report of the Parks Manager.
- 9. Correspondence/Requests for use of the Parks**
  - (i) Keswick Rotary Club – request to allow festoon lighting to selected trees in Hope Park for Lights to the Lake Project

**Prior to the following business the Chairman will move the following resolution:**

*'That under the Public Bodies (Admission to Meetings) Act 1960, the public and representatives of the press and broadcast media be excluded from the meeting during the consideration of the following items of business as publicity would be prejudicial to the public interest because of the confidential nature of the business to be transacted.'*

**10. Contracting – Fitz Park Games**

To agree arrangements for operation of the games for the 2019 season.

**11. Hope Park Lease/Licence**

To receive an update from the Clerk.

**12. Hope Leisure Ltd**

To note contents of letter dated 20<sup>th</sup> November 2018 from Hope Leisure Ltd.

**FITZ PARK, HOPE PARK & TOWNSFIELD CHARITABLE TRUSTS**

Minutes of the meeting of Fitz Park, Hope Park & Townsfield Charitable Trusts held in the Council Chamber, First Floor, Council Offices, Keswick, on Thursday 8<sup>th</sup> November 2018 at 7.30pm.

---

Present:

Chairman  
Councillor Adam Paxon

	Councillors		
David Burn	Allan Daniels		Martin Jordan
Denstone Kemp	Graham Kendall		Susan Leighton
Duncan Miller			

Also in attendance were Lynda Walker (Trust Clerk), Christine Fawcett (Parks Manager) and Catherine Parker (Responsible Financial Officer).

**50. Apologies**

Apologies for absence were received from Councillors Lywood, Murray, Pugmire and Titley.

**51. Declarations of Interests**

No declarations of interests were received in respect of items on this agenda.

**52. Minutes**

**RESOLVED** that the Chairman be authorised to sign as a correct record the minutes of the meeting held on 13<sup>th</sup> September 2018 (pages 7 - 8).

**53. Chairman's Report**

The Chairman thanked all the staff for their hard work.

**54. Draft Budgets for Hope and Fitz Parks 2019-20**

**RESOLVED** that the draft budgets for Hope and Fitz Parks for 2019-20 be approved and that the fund movements recommended by the Responsible Financial Officer be implemented as follows:

- i) Hope Park - £3,000 to be transferred from the Memorials Fund to the Development & Equipment Fund
- ii) Fitz Park - £3,000 to be transferred from the Memorials Fund to the Sinking Fund

It was further **RESOLVED** that the Building Fund bank account be closed and the remaining balance be transferred into the Hope Park current account.

**55. Hope Park & Fitz Park Budgets – 2<sup>nd</sup> quarter 2018-19**

**RECEIVED** for information the 2<sup>nd</sup> quarter budget comparisons.

**56. Parks Manager's Report**

Consideration was given to the report of the Parks Manager.

**RESOLVED** that the proposal to carry out litter picking during the week only (i.e. not on Saturdays or Sundays) from November to March be trialed with a review in January.

**57. Clerk's Report**

Consideration was given to the Clerk's report.

**RESOLVED:**

- i) That the request from Keswick Cricket Club to fund the replacement of the doors at the pavilion in Fitz Park be approved in principle, and that Councillor Miller meet Keith Richardson to agree the work required and report back to the January Trust meeting.
- ii) That the purchase of a chipper at a cost of £9,200 be ratified to be funded from the Fitz Park sinking fund.

**58. Correspondence/Requests for use of the Parks**

The following correspondence was considered:

- (i) Keswick Lions Club – request for use of Fitz Park for fundraising event in aid of Diabetes Awareness provisional date August 2019  
**RESOLVED** that the request be approved – no charge to be levied
- (ii) Letter from Steve Harwood on behalf of Keswick Athletics Club advising that distance markers had now been fixed at Fitz Park as previously approved

**Prior to the following business the Chairman moved the resolution:**

*'That under the Public Bodies (Admission to Meetings) Act 1960, the public and representatives of the press and broadcast media be excluded from the meeting during the consideration of the following items of business as publicity would be prejudicial to the public interest because of the confidential nature of the business to be transacted.'*

**59. Contracting - Hope Park Lease/Licence**

The Clerk gave an update on progress with the new Lease and Licence for Hope Park together with details of a request from the leaseholder following closure of the putting green during September and October and use of temporary greens on the pitch and putt golf course.

**RESOLVED:** that the Chair and Vice Chair be authorised to sign the new lease and licence for Hope Park, and that the leaseholder be compensated for the loss of income from the putting green only for the period from 10<sup>th</sup> September to 31<sup>st</sup> October 2018, to the level of takings for the same period in 2017.

**60. Amendment to Lease – Keswick Football Club**

**RECEIVED** an update from the Clerk.

The meeting closed at 8.50 p.m.

\_\_\_\_\_  
Chairman

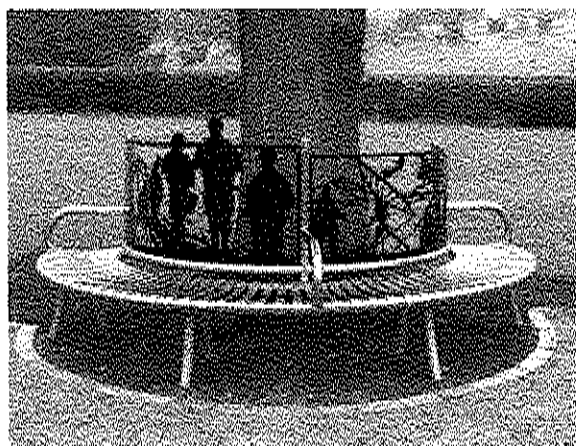
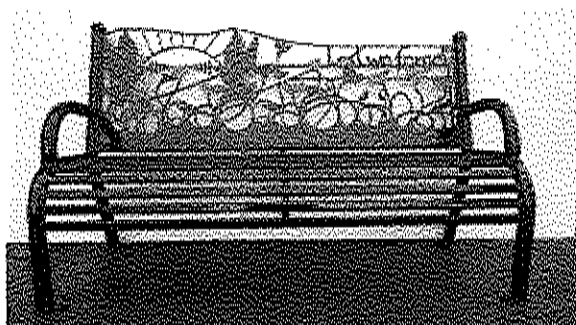
\_\_\_\_\_  
Date

**KESWICK PARKS CHARITABLE TRUSTS MEETING  
10 JANUARY 2019**

**CLERK'S REPORT**

**1. Memorial Tree and Seat**

An oak tree has now been planted to commemorate the anniversary of the end of WW1 in Lower Fitz Park. Discussion has taken place about installing a commemorative seat beside or around this tree and some examples are shown below. Prices will be available at the meeting and funding will need to be sourced – Trustees are asked to give some thought to a preferred option.





## 2. Crosthwaite Road Car Park

The planning permission for Crosthwaite Road car park includes a condition that a hedge be planted (this was originally specified as a mixed species hedge but subsequently changed to a beech hedge). Revised permission was granted on 13 March 2017 with a period of three years in which to commence the work.

Christine has measured the car park perimeter and 210 yards of hedging is required costing in the region of £900 - £1400 depending on the supplier. As at the end of November 2018 the income from the car park was £24,121.50 with expenditure of £4,835.06. Approval is sought to obtain the hedge to be funded from the car park profit for the current year.

## 3. Litter Picking

At the last meeting it was agreed that a proposal to carry out litter picking during the week only (i.e. not on Saturdays or Sundays) from November to March be trialled with a review in January. The new arrangement has worked well to date and it is therefore proposed to continue with weekday only litter picking until the end of March 2019.

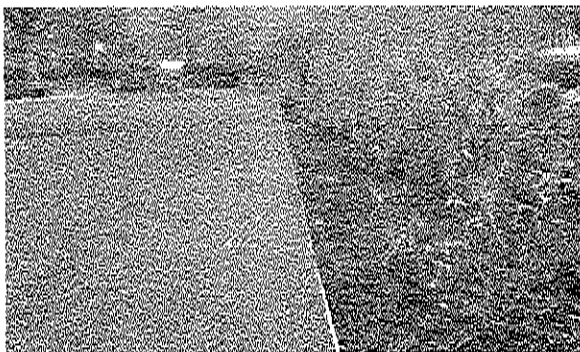
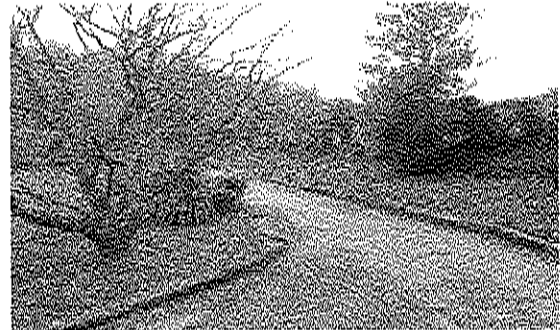
LW  
030119

Fine and dry conditions over this last period have meant good progress in all the Parks has been made. Thanks must go to the parks staff for their hard work and the devoted efforts of the three ladies within the office.

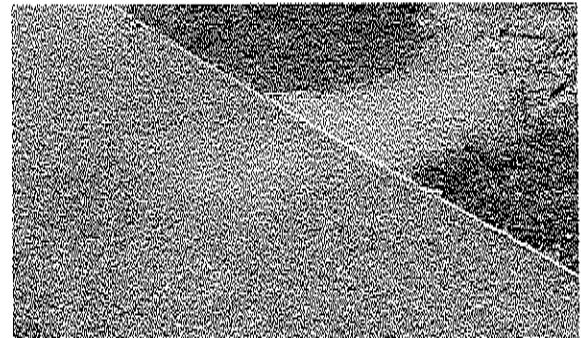
**Hope Park**

The shrub borders have had a good prune and some shrubs have had regenerative pruning carried out. The purchase of a wood chipper has been put to good use and all material chipped back onto the mature shrub beds to act as a mulch and weed suppressant.

All of the herbaceous borders have also been mulched, making good use of the donated mulch we receive from local tree surgeons. This chipped wood is tipped in a heap and stored/turned throughout the summer to create the mulch we require and is also a good form of recycling.



A new wooden edge has also been added to the large grass area in Lady Hope's garden, this is to improve the upkeep of the grassed edge.

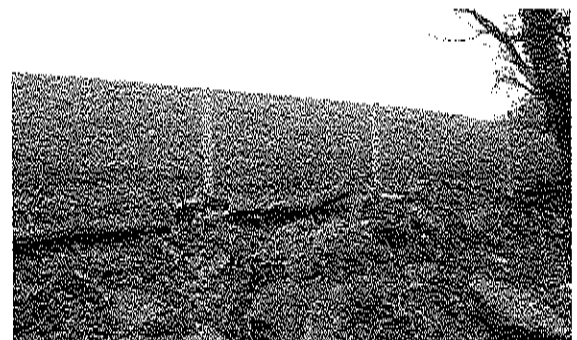


Given the large amount of footfall and damage to grass where the stream footpath exits we have removed the damaged grass and installed an old artificial grass tee. This I am hoping will stop the muddy un-recovering grass and look a lot better.

Two tee boxes have been brought in from the pitch and putt course for refurbishment. This includes metal work rub down and repaint, new replacement wooden board and new replacement artificial grass tee. Material costs £500.00 and it is one of those jobs done on a rainy day. I must also say it's 100% better in the new workshop, lighter, warmer and a great space to work in on a wet winter's day.



The over grown hedge between Crow Park/Hope Park has begun to be cut back/laid and replanted. When new growth comes through we will



maintain this hedge to a lower level and try and create a thicker more substantial hedge more suitable to wildlife.

A quote has been received from Wilsons Plant to resurface the footpath from the golf hut to the entrance of Lady Hope's garden. This footpath has been repaired several times in the past but has now come to the stage of needing a new surface and some repairs to the surface drains. This quote has come in at £4330.20. With the trustees permission I would like to create the funds as follows:

£3000.00 paths/fences  
£230.20 electricity/heating oil  
£350.00 drainage work to fairway  
£750.00 contingency  
Total £4330.20

### War Memorial

The wreath rail has worked well and the wreaths have stayed in place for this special time. Good use of some of the spoil from the installation of the multi-use gym has been made to fill in hollows on the grass at Wivell Park.

### Lower Fitz Park

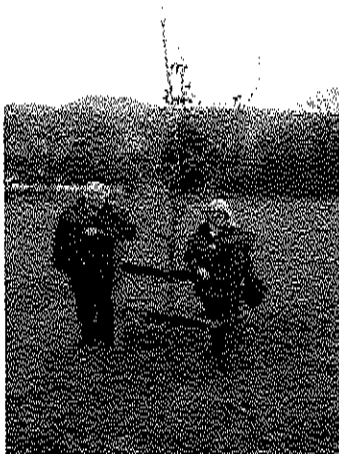
The playground has had various replacement parts fitted at a cost of £1200.00 which is just part of the wear and tear process. A top up of play bark will be carried out in the New Year.

The outdoor gym is now in place and is generating interest; we will continue to monitor the grass area around the gym and hopefully it will recover next spring.

A quote has been received to resurface the main entrance into the park beside Café West. This has come in at £3378.00, the budget was set at £3000.00 for the path/wall repairs. £605.00 has been spent to date on the repairs needed to the wall on Station Road, leaving £2395.00. With the trustees permission we can use the remaining £2395.00 and top up the remaining £983.00 from the CSA expenditure budget as this the main access to the CSA too and there are funds available.

The tree survey has been carried out by Capita and we are awaiting the results of this report. With us already having storm damage throughout the year in mainly Fitz Park at a cost of approximately £1350.00 additional money may be needed to carry out the recommendations of this report.

A quote has been received to top up the gravel surface to the car park at a cost of £1909.02 for 48 ton of gravel and levelling. This will be carried out in the New Year when traffic and use is minimal.



The oak tree *Quercus robur* has now been planted to commemorate the anniversary of the 1<sup>st</sup> World War.

A memorial tree has also been planted further down the footpath; this is also an oak tree, *Quercus palustris*

These two trees have been planted in places where trees have been removed in years gone by and by replanting them in the spaces we hope to recreate the old original avenue of trees.



## Upper Fitz Park

Park staff have been busy pruning back shrubs on the side of the Bowling Green to encourage regeneration and allow more light/air into the park.

Mulching of the shrub borders is now being carried out and new spring flowering bulbs have been planted, including daffodils, crocus and chionodoxa.



The shrub border beside the Bowling Green which was removed for the flood resilience plan has been replanted with more suitable lower planting. This includes:



*Helleborus orientalis* hybrids,  
*Physocarpus opulifolius* "Diabolo"  
*Miscanthus sinensis* "Morning light"  
*Liriope muscari* "Big blue"  
*Stipa* "Pony tails" and  
*Rebeckia fulgida* "Goldsturm"

The Pups shelter has had its gutters cleaned out and repaired including a new downspout, let's hope it is not vandalised and ripped off again.



Pruning back of shrubs next to the main entrance is also being carried out again to encourage regeneration

## Hope Park Trustees- Lights to the Lake Project

10/12/2018 - 22:09

Dear Ms Walker,

I write to ask if you would kindly present a request to the Trustees of Hope Park for permission in principle to allow fixing of a festoon of lights to selected trees in Hope Park.

The Rotary Club of Keswick is providing support to the Theatre by the Lake Services company to establish the feasibility of purchasing and installing a chain of LED lights to provide a clear marked route from the egress of the tunnel at the foot of Lake Road to the lake shore area. The project can only succeed if the permissions of all interested parties are granted, and necessary funding can be put in place. Both these requirements are currently being progressed, with a view to establishing feasibility in principle in the New Year. Implementation can then proceed as soon as all necessary steps have been completed - it is hoped that the lights may be in place in the Spring of next year.

The approximate, intended route is shown in red on the attached map, and it is hoped it will be agreed that, starting from outside Hope Park Café, route can run along the edge of Hope and Crow Parks, before crossing the road opposite the Theatre, and running on to just short of the National Trust shop opposite the lake foreshore. Fuller details are copied below from the Project Feasibility paper.

COPY

**Project Objectives:** - *To mark clearly the route from the Lake Road pedestrian tunnel egress down to the Lake, including the Theatre, the Café, and the Car Park, and the accesses to Hope Park and Crow Park*

- *To supplement the currently inadequate footway lighting.*
- *To install 2 additional highway lamp standards and thereby improve both the highway lighting, and the footway illumination; the specification could include the extra cable and socket fittings to power the festoon lights. (These will require CC agreement and funding).*
- *Thus, to extend the season to all-year-round for pedestrian traffic to the Lake, and to the facilities in the lake front area.*
- *To complement this project with a campaign for improved signage, for both pedestrians and vehicles, to the Lake and the Theatre.*

**The Lights to the Lake Project Description** - *is thus to try to replicate the Yellow Brick Road installation, with a chain (festoon) of weather-resistant lights starting from the Hope Park Café and running down to the Boat Landings. The lights would be fixed to trees, generally in Hope Park and Crow Park, subject to the National and Park Trust approvals, and crossing to the theatre side of the road beyond Crow Park, to run down to, and round, the Kiosk area, finishing probably before the National Trust shop...."*

It is also hoped that an application for 2 further Highway Lamp Standards for the road to the lake will also be successful, and we have just heard that long-outstanding applications for better signage to the lake and the theatre will now be implemented.

The Theatre by the Lake Service Company will consider a request to take overall responsibility for the installation, it's insurance, maintenance and operation, assuming the project is implement.

Early discussions to establish availability of funding are under way, and justify initiating both quotations for supply and fitting of the festoon of lights, and establishing in principle that affected parties will be prepared to give their permission.

If you need more information please do let me know, and I hope that, in the near future, you will be willing to confirm that permission will be given if feasibility of the Lights to the Lake project is established.

Kind regards,

Tony Welton  
Keswick Rotary Club

